

## Product datasheet for **AP31184PU-N**

### **MMP1 (C-term) Rabbit Polyclonal Antibody**

#### **Product data:**

Product Type:	Primary Antibodies
Applications:	IHC, WB
Recommended Dilution:	<b>Immunohistochemistry on Paraffin Sections:</b> 1/50. <b>Western Blot.</b>
Reactivity:	Human
Host:	Rabbit
Isotype:	IgG
Clonality:	Polyclonal
Immunogen:	MMP1 antibody was raised against a synthetic peptide from near C-terminal of human MMP-1 protein.
Specificity:	This antibody reacts to the C-term of MMP1.
Formulation:	10 mM PBS, pH 7.4 containing BSA as stabilizer and sodium azide as preservative State: Aff - Purified State: Liquid purified Ig fraction
Purification:	Immunoaffinity chromatography
Conjugation:	Unconjugated
Storage:	Store the antibody undiluted at 2-8°C. <b>DO NOT FREEZE!</b>
Stability:	Shelf life: one year from despatch.
Gene Name:	matrix metalloproteinase 1
Database Link:	<a href="#">Entrez Gene 4312 Human P03956</a>
Background:	MMP1 is a Metalloproteinase M10A type protease. MMP1, also known as collagenase, is a secreted protein. Collagenase is the only enzyme able to initiate breakdown of the interstitial collagens, types I, II, and III. The fact that the collagens are the most abundant proteins in the body means that collagenase plays a key role in the remodeling that occurs constantly in both normal and diseased conditions.
Synonyms:	Interstitial collagenase, Matrix metalloproteinase-1, Fibroblast collagenase, MMP1, CLG

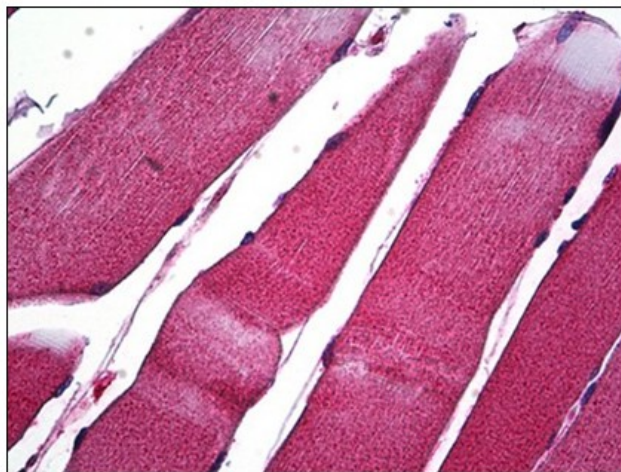


[View online »](#)

**Protein Families:** Druggable Genome, Protease, Secreted Protein

**Protein Pathways:** Bladder cancer, Pathways in cancer, PPAR signaling pathway

**Product images:**



Human Skeletal Muscle: Formalin-Fixed, Paraffin-Embedded (FFPE)