

Product datasheet for **AP31183PU-N**

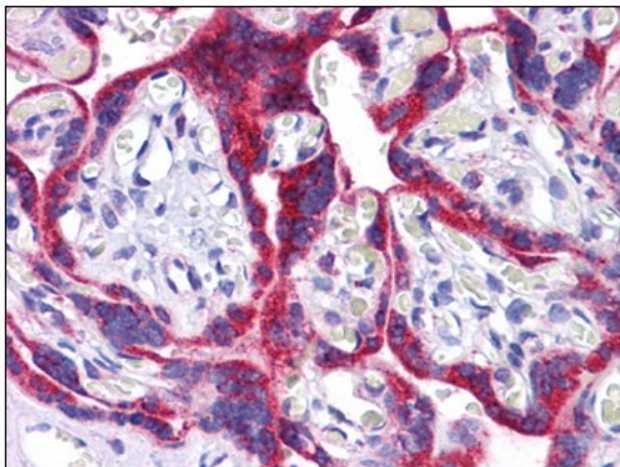
ATG9B (C-term) Rabbit Polyclonal Antibody

Product data:

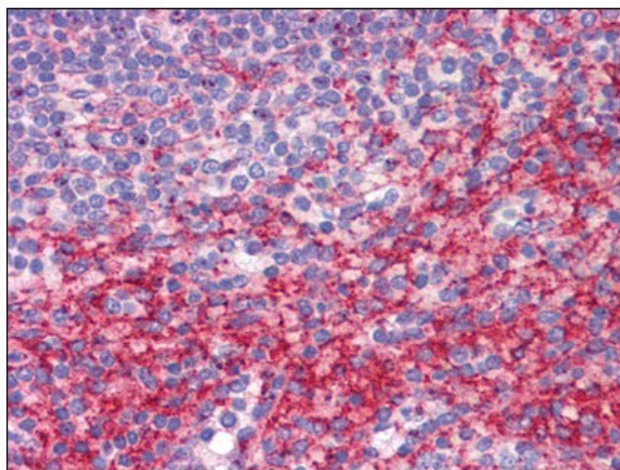
Product Type:	Primary Antibodies
Applications:	ELISA, IF, IHC, WB
Recommended Dilution:	ELISA. Immunocytochemistry: 5 - 10 µg/ml. Immunohistochemistry on Paraffin Sections: 5 µg/ml. Western Blot: 1 - 2 µg/ml.
Reactivity:	Human, Mouse, Rat
Host:	Rabbit
Isotype:	IgG
Clonality:	Polyclonal
Immunogen:	ATG9B antibody was raised against synthetic peptide - KLH conjugated
Specificity:	This antibody reacts to ATG9B / APG9L2.
Formulation:	PBS containing 0.02% sodium azide as preservative State: Purified State: Liquid purified Ig fraction
Concentration:	lot specific
Purification:	Immunoaffinity chromatography
Conjugation:	Unconjugated
Storage:	Store the antibody undiluted at 2-8°C.
Stability:	Shelf life: one year from despatch.
Gene Name:	autophagy related 9B
Database Link:	Entrez Gene 213948 Mouse Entrez Gene 499973 Rat Entrez Gene 285973 Human Q674R7
Synonyms:	NOS3AS, Autophagy-related protein 9B, APG9-like 2
Protein Families:	Transmembrane



[View online »](#)

Product images:

Human Placenta: Formalin-Fixed, Paraffin-Embedded (FFPE)



Human Spleen: Formalin-Fixed, Paraffin-Embedded (FFPE)