

Product datasheet for **AP31181PU-N**

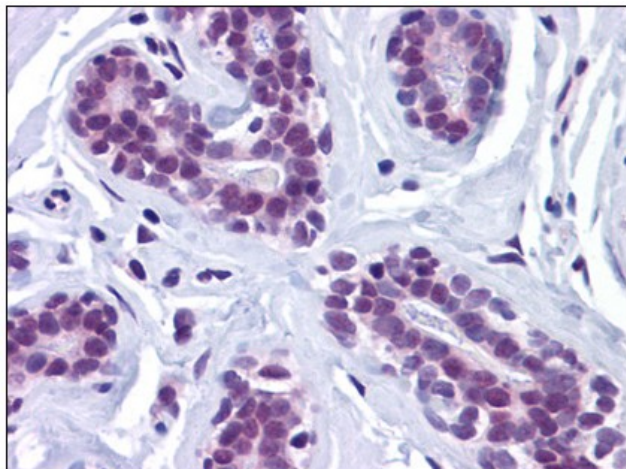
CtIP (RBBP8) Rabbit Polyclonal Antibody

Product data:

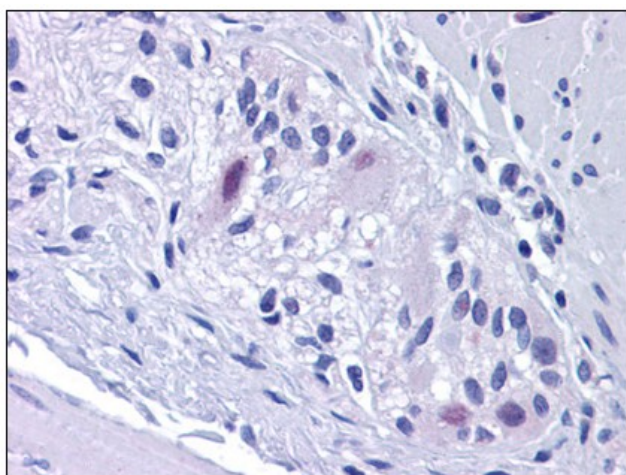
| | |
|-----------------------|---|
| Product Type: | Primary Antibodies |
| Applications: | ELISA, IHC, WB |
| Recommended Dilution: | ELISA. Immunohistochemistry on Paraffin Sections: 5 µg/ml. Western Blot: 1 - 2 µg/ml. |
| Reactivity: | Human, Mouse, Rat |
| Host: | Rabbit |
| Isotype: | IgG |
| Clonality: | Polyclonal |
| Immunogen: | RBBP8 antibody was raised against synthetic peptide - KLH conjugated |
| Specificity: | This antibody reacts to RBBP8 / CTIP. |
| Formulation: | PBS containing 0.02% sodium azide as preservative State: Purified State: Liquid purified Ig fraction |
| Concentration: | lot specific |
| Purification: | Immunoaffinity chromatography |
| Conjugation: | Unconjugated |
| Storage: | Store the antibody undiluted at 2-8°C. |
| Stability: | Shelf life: one year from despatch. |
| Gene Name: | RB binding protein 8, endonuclease |
| Database Link: | Entrez Gene 225182 Mouse Entrez Gene 291787 Rat Entrez Gene 5932 Human Q99708 |
| Synonyms: | CTIP,RBBP-8, CtBP-interacting protein |



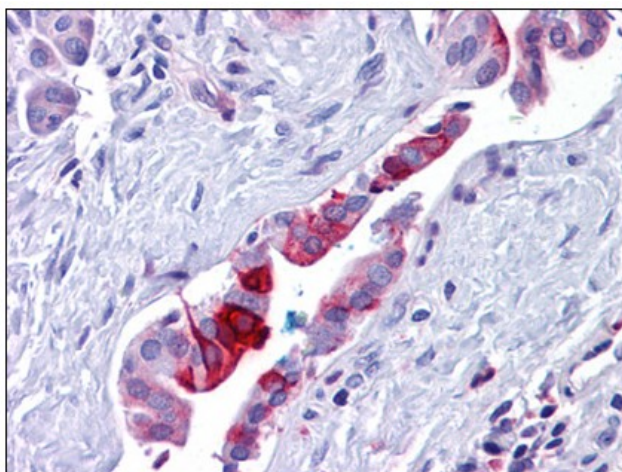
[View online »](#)

Product images:

Human Breast: Formalin-Fixed, Paraffin-Embedded (FFPE)



Human Colon, Myenteric Plexus: Formalin-Fixed, Paraffin-Embedded (FFPE)



Human Pancreas, Duct: Formalin-Fixed, Paraffin-Embedded (FFPE)