

Product datasheet for **AP31180PU-N**

Osteopontin (SPP1) Rabbit Polyclonal Antibody

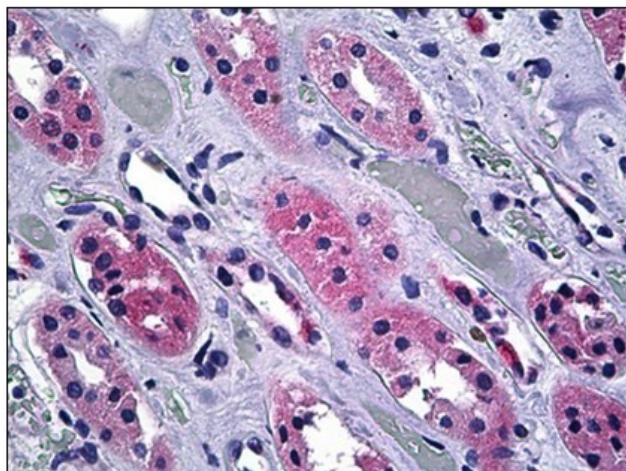
Product data:

Product Type:	Primary Antibodies
Applications:	IHC, WB
Recommended Dilution:	Immunohistochemistry on Paraffin Sections: 1/25. Western Blot: 0.5 µg/ml.
Reactivity:	Human
Host:	Rabbit
Isotype:	IgG
Clonality:	Polyclonal
Immunogen:	SPP1 antibody was raised against a synthetic peptide derived from internal domain of human Osteopontin
Specificity:	This antibody reacts to the internal region of SPP1 / Osteopontin.
Formulation:	10 mM PBS, pH 7.4 containing BSA as stabilizer and sodium azide as preservative State: Purified State: Liquid purified Ig fraction
Purification:	Immunoaffinity chromatography
Conjugation:	Unconjugated
Storage:	Store the antibody undiluted at 2-8°C. DO NOT FREEZE!
Stability:	Shelf life: one year from despatch.
Gene Name:	secreted phosphoprotein 1
Database Link:	Entrez Gene 6696 Human P10451
Background:	Osteopontin (OPN) is an integrin-binding protein overexpressed in various experimental models of malignancy and appears to be involved in tumorigenesis and metastasis.
Synonyms:	BNSP, OPN, SPP-1, Nephropontin, Uropontin
Protein Families:	Druggable Genome, Secreted Protein
Protein Pathways:	ECM-receptor interaction, Focal adhesion, Toll-like receptor signaling pathway



[View online »](#)

Product images:



Human Kidney: Formalin-Fixed, Paraffin-Embedded (FFPE)