

Product datasheet for **AP31172PU-N**

Neurotensin Receptor 1 (NTSR1) Rabbit Polyclonal Antibody

Product data:

Product Type:	Primary Antibodies
Applications:	ELISA, IHC, WB
Recommended Dilution:	ELISA: 1/1000. Immunohistochemistry on Paraffin Sections: 1/200. Western Blot: 1/500 - 1/1000.
Reactivity:	Human, Mouse
Host:	Rabbit
Isotype:	IgG
Clonality:	Polyclonal
Immunogen:	NTSR1 antibody was raised against synthetic peptide
Specificity:	This antibody reacts to NTSR1.
Formulation:	PBS (without Mg ²⁺ , Ca ²⁺), pH 7.4, 150 mM sodium chloride, 0.02% sodium azide, 50% glycerol State: Purified State: Liquid purified Ig fraction
Concentration:	lot specific
Purification:	Immunoaffinity chromatography
Conjugation:	Unconjugated
Storage:	Store the antibody undiluted at 2-8°C for one month or (in aliquots) at -20°C for longer. Avoid repeated freezing and thawing.
Stability:	Shelf life: one year from despatch.
Gene Name:	neurotensin receptor 1 (high affinity)
Database Link:	Entrez Gene 18216 Mouse Entrez Gene 4923 Human P30989



[View online »](#)

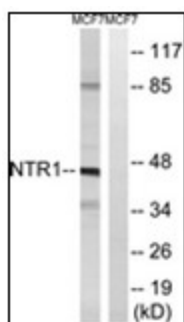
Background: NTR1, a Neurotensin Receptor, activates a phosphatidylinositol-calcium second messenger system in the central and peripheral nervous systems. It mediates the functions of neurotensin, such as hypotension, hyperglycemia, hypothermia, antinociception, and regulation of intestinal motility and secretion. Neurotensin Receptor 1 expression is enhanced in pancreatic cancer and in chronic pancreatitis (Wang et al, 2000). Two differentially glycosylated forms of the NT1 receptor have been identified in rats, a 54-kD form that is expressed from birth to adulthood, and a 52-kD form only detected at 10 and 15 days postnatal.

Synonyms: NT-R-1, NTSR1, NTRR, NTR1

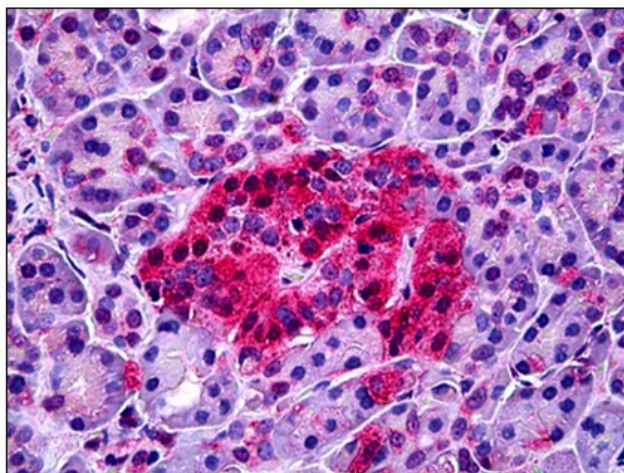
Protein Families: Druggable Genome, GPCR, Transmembrane

Protein Pathways: Calcium signaling pathway, Neuroactive ligand-receptor interaction

Product images:



Western blot analysis of extracts from MCF7 cells, using NTSR1 antibody. The lane on the right is treated with the synthesized peptide.



Human Pancreas: Formalin-Fixed, Paraffin-Embedded (FFPE)