

## Product datasheet for **AP31171PU-N**

### CD51 (ITGAV) (C-term) Rabbit Polyclonal Antibody

#### Product data:

Product Type:	Primary Antibodies
Applications:	ELISA, IHC, WB
Recommended Dilution:	<b>ELISA:</b> 1/10000. <b>Immunohistochemistry on Paraffin Sections:</b> 1/200. <b>Western Blot:</b> 1/500 - 1/1000.
Reactivity:	Human
Host:	Rabbit
Isotype:	IgG
Clonality:	Polyclonal
Immunogen:	ITGAV antibody was raised against synthetic peptide
Specificity:	This antibody reacts to ITGAV / CD51.
Formulation:	PBS (without Mg <sup>2+</sup> , Ca <sup>2+</sup> ), pH 7.4, 150 mM sodium chloride, 0.02% sodium azide, 50% glycerol State: Purified State: Liquid purified Ig fraction
Concentration:	lot specific
Purification:	Immunoaffinity chromatography
Conjugation:	Unconjugated
Storage:	Store the antibody at -20°C. Avoid repeated freezing and thawing.
Stability:	Shelf life: one year from despatch.
Gene Name:	integrin subunit alpha V
Database Link:	<a href="#">Entrez Gene 3685 Human P06756</a>



[View online »](#)

**Background:**

ITGAV encodes integrin alpha chain V. Integrins are heterodimeric integral membrane proteins composed of an alpha chain and a beta chain. The I-domain containing integrin alpha V undergoes post-translational cleavage to yield disulfide-linked heavy and light chains, that combine with multiple integrin beta chains to form different integrins. Among the known associating beta chains (beta chains 1,3,5,6, and 8; 'ITGB1', 'ITGB3', 'ITGB5', 'ITGB6', and 'ITGB8'), each can interact with extracellular matrix ligands; the alpha V beta 3 integrin, perhaps the most studied of these, is referred to as the Vitronectin receptor (VNR). In addition to adhesion, many integrins are known to facilitate signal transduction.

**Synonyms:**

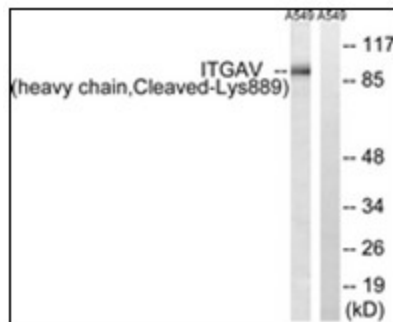
Integrin alpha-V, MSK8, VNRA, Vitronectin receptor subunit alpha

**Protein Families:**

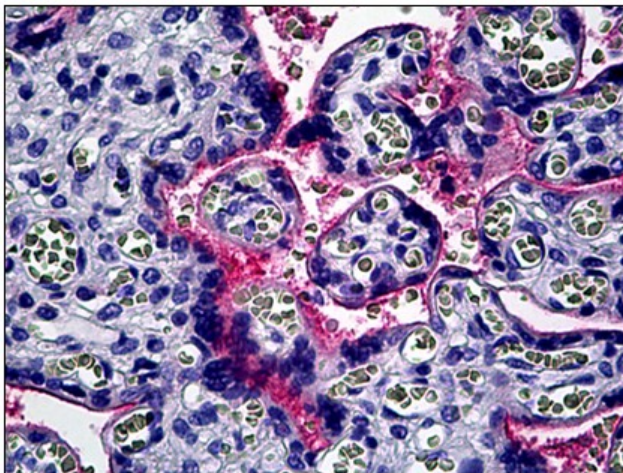
Druggable Genome, ES Cell Differentiation/IPS, Transmembrane

**Protein Pathways:**

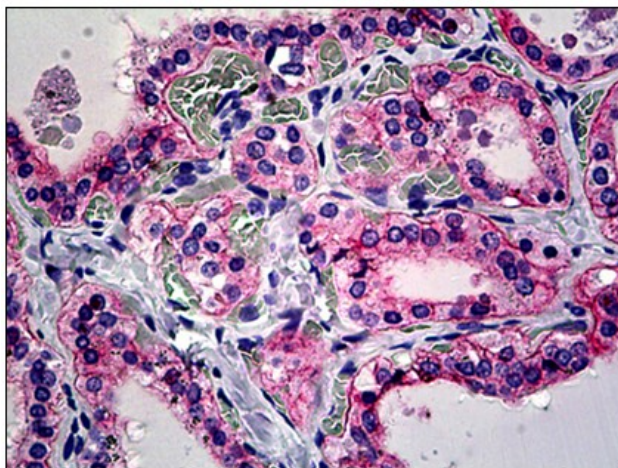
Arrhythmogenic right ventricular cardiomyopathy (ARVC), Cell adhesion molecules (CAMs), Dilated cardiomyopathy, ECM-receptor interaction, Focal adhesion, Hypertrophic cardiomyopathy (HCM), Pathways in cancer, Regulation of actin cytoskeleton, Small cell lung cancer

**Product images:**


Western blot analysis of extracts from A549 cells, treated with etoposide 25uM 1h, using ITGAV (heavy chain, Cleaved-Lys889) Antibody. The lane on the right is treated with the synthesized peptide.



Human Placenta: Formalin-Fixed, Paraffin-Embedded (FFPE)



Human Thyroid: Formalin-Fixed, Paraffin-Embedded (FFPE)