

Product datasheet for **AP31170PU-N**

HDAC6 (N-term) Rabbit Polyclonal Antibody

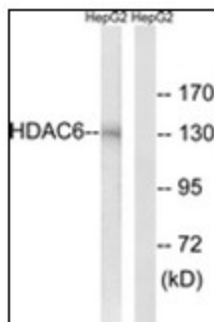
Product data:

Product Type:	Primary Antibodies
Applications:	ELISA, IF, IHC, WB
Recommended Dilution:	ELISA: 1/1000. Immunofluorescence: 1/100 - 1/500. Immunohistochemistry on Paraffin Sections: 1/200. Western Blot: 1/500 - 1/1000.
Reactivity:	Human, Mouse
Host:	Rabbit
Isotype:	IgG
Clonality:	Polyclonal
Immunogen:	HDAC6 antibody was raised against synthetic peptide
Specificity:	This antibody reacts to the N-term of HDAC6.
Formulation:	PBS (without Mg ²⁺ , Ca ²⁺), pH 7.4, 150 mM sodium chloride, 0.02% sodium azide, 50% glycerol State: Purified State: Liquid purified Ig fraction
Concentration:	lot specific
Purification:	Immunoaffinity chromatography
Conjugation:	Unconjugated
Storage:	Store the antibody at -20°C. Avoid repeated freezing and thawing.
Stability:	Shelf life: one year from despatch.
Gene Name:	histone deacetylase 6
Database Link:	Entrez Gene 15185 Mouse Entrez Gene 10013 Human Q9UBN7
Synonyms:	Histone deacetylase 6, HD6, KIAA0901, JM21
Protein Families:	Druggable Genome, Transcription Factors

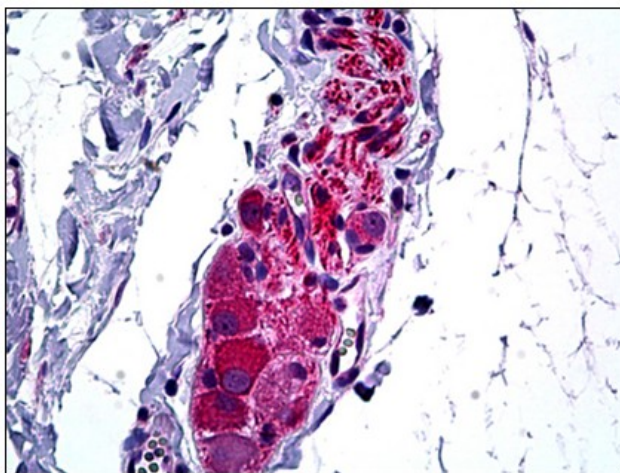


[View online »](#)

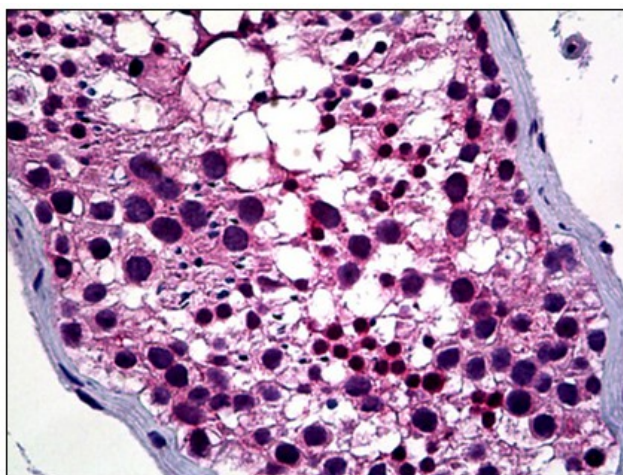
Product images:



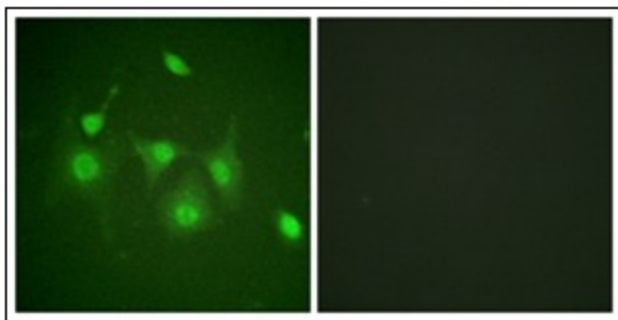
Western blot analysis of extracts from HepG2 cells, using HDAC6 Antibody. The lane on the right is treated with the synthesized peptide.



Human Intestine, Ganglion Cells: Formalin-Fixed, Paraffin-Embedded (FFPE)



Human Testis: Formalin-Fixed, Paraffin-Embedded (FFPE)



Immunofluorescence analysis of HepG2 cells, using HDAC6 Antibody. The picture on the right is treated with the synthesized peptide.