

## Product datasheet for **AP31166PU-N**

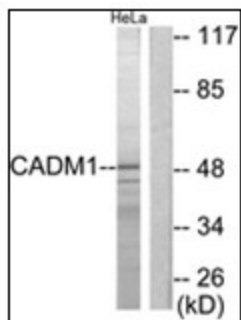
### SynCAM (CADM1) (C-term) Rabbit Polyclonal Antibody

#### Product data:

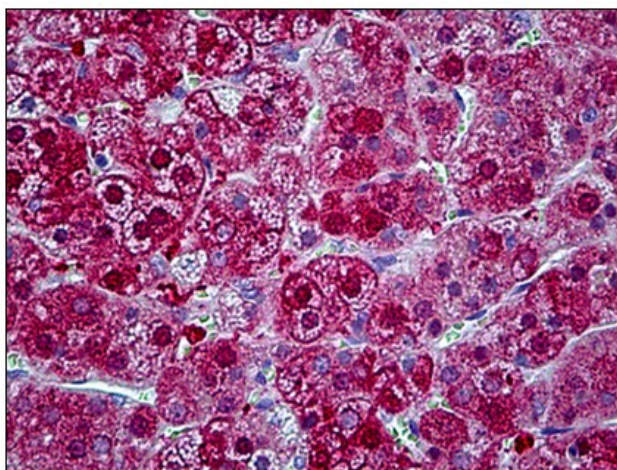
Product Type:	Primary Antibodies
Applications:	ELISA, IHC, WB
Recommended Dilution:	<b>ELISA:</b> 1/20000. <b>Immunohistochemistry on Paraffin Sections:</b> 1/200. <b>Western Blot:</b> 1/500 - 1/1000.
Reactivity:	Human, Mouse
Host:	Rabbit
Isotype:	IgG
Clonality:	Polyclonal
Immunogen:	CADM1 antibody was raised against synthetic peptide
Specificity:	This antibody reacts to the C-term of CADM1.
Formulation:	PBS (without Mg <sup>2+</sup> , Ca <sup>2+</sup> ), pH 7.4, 150 mM sodium chloride, 0.02% sodium azide, 50% glycerol State: Purified State: Liquid purified Ig fraction
Concentration:	lot specific
Purification:	Immunoaffinity chromatography
Conjugation:	Unconjugated
Storage:	Store the antibody at -20°C. Avoid repeated freezing and thawing.
Stability:	Shelf life: one year from despatch.
Gene Name:	cell adhesion molecule 1
Database Link:	<a href="#">Entrez Gene 54725 Mouse</a> <a href="#">Entrez Gene 23705 Human</a> <a href="#">Q9BY67</a>
Synonyms:	IGSF4, IGSF4A, NECL2, TSLC1, NECL-2, SgIgSF, TSLC-1
Protein Families:	Transmembrane
Protein Pathways:	Cell adhesion molecules (CAMs)



[View online »](#)

**Product images:**

Western blot analysis of extracts from HeLa cells, using CADM1 Antibody. The lane on the right is treated with the synthesized peptide.



Human Adrenal: Formalin-Fixed, Paraffin-Embedded (FFPE)