

Product datasheet for **AP31165PU-N**

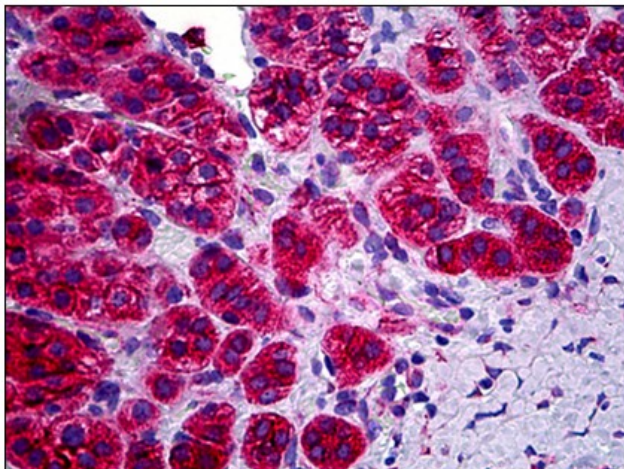
OR1N1 (C-term) Rabbit Polyclonal Antibody

Product data:

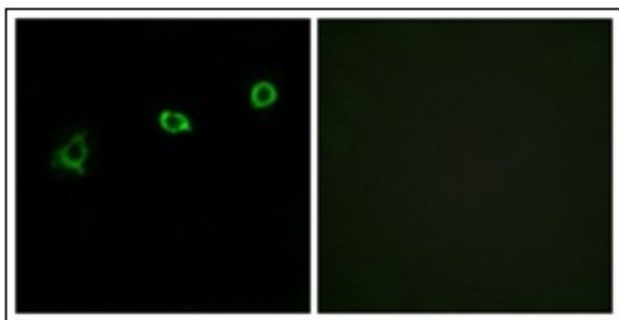
Product Type:	Primary Antibodies
Applications:	ELISA, IF, IHC
Recommended Dilution:	ELISA: 1/10000. Immunofluorescence: 1/100 - 1/500. Immunohistochemistry on Paraffin Sections: 1/200.
Reactivity:	Human
Host:	Rabbit
Isotype:	IgG
Clonality:	Polyclonal
Immunogen:	OR1N1 antibody was raised against synthetic peptide
Specificity:	This antibody reacts to the C-term of OR1N1.
Formulation:	PBS (without Mg ²⁺ , Ca ²⁺), pH 7.4, 150 mM sodium chloride, 50% glycerol containing 0.02% sodium azide as preservative State: Purified State: Liquid purified Ig fraction
Concentration:	lot specific
Purification:	Immunoaffinity chromatography
Conjugation:	Unconjugated
Storage:	Store the antibody at -20°C. Avoid repeated freezing and thawing.
Stability:	Shelf life: one year from despatch.
Gene Name:	olfactory receptor family 1 subfamily N member 1
Database Link:	Entrez Gene 138883 Human Q8NGSQ
Synonyms:	Olfactory receptor OR9-22, Olfactory receptor 1-26, Olfactory receptor 1N3, OR1N1, OR1N3
Protein Families:	Transmembrane
Protein Pathways:	Olfactory transduction



[View online »](#)

Product images:

Human Adrenal: Formalin-Fixed, Paraffin-Embedded (FFPE)



Immunofluorescence analysis of HuvEc cells, using OR1N1 Antibody. The picture on the right is treated with the synthesized peptide.