

## Product datasheet for **AP31150PU-N**

### beta III Tubulin (TUBB3) Chicken Polyclonal Antibody

#### Product data:

Product Type:	Primary Antibodies
Applications:	IF, IHC, WB
Recommended Dilution:	<b>Immunocytochemistry:</b> 1/1000 - 1/2000. <b>Immunohistochemistry on Paraffin Sections:</b> 5 µg/ml. <b>Western Blot:</b> 1/2000 - 1/5000.
Reactivity:	Human, Mouse, Rat
Host:	Chicken
Isotype:	IgY
Clonality:	Polyclonal
Immunogen:	TUBB3 / Tubulin Beta 3 antibody was raised against three synthetic peptides corresponding to different regions of the beta-Tubulin 3 (KLH).
Specificity:	This antibody recognizes beta-Tubulin 3.
Formulation:	10mM PBS, pH 7.2 containing 0.02% Sodium Azide as preservative State: Aff - Purified State: Liquid purified IgY fraction
Concentration:	lot specific
Purification:	Immunoaffinity Chromatography
Conjugation:	Unconjugated
Storage:	Store the antibody undiluted at 2-8°C for one month or (in aliquots) at -20°C for longer. Avoid repeated freezing and thawing.
Stability:	Shelf life: one year from despatch.
Gene Name:	tubulin beta 3 class III
Database Link:	<a href="#">Entrez Gene 10381 Human Q13509</a>



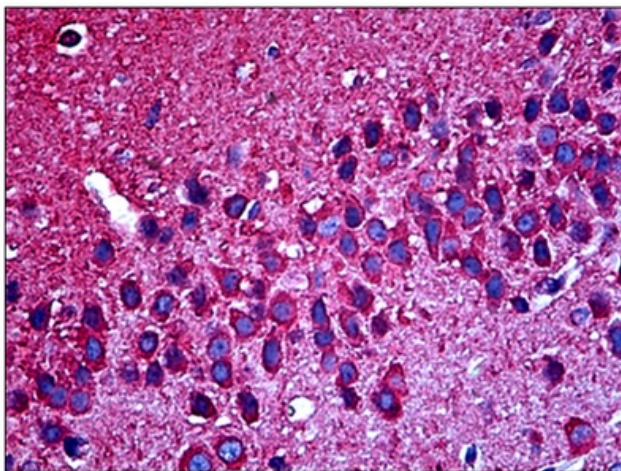
[View online »](#)

**Background:**

TUBB3 / Tubulin Beta 3 is a class III member of the beta tubulin protein family. Beta tubulins are one of two core protein families (alpha and beta tubulins) that heterodimerize and assemble to form microtubules. This protein is primarily expressed in neurons and may be involved in neurogenesis and axon guidance and maintenance. Mutations in this gene are the cause of congenital fibrosis of the extraocular muscles type 3. Alternate splicing results in multiple transcript variants.

**Synonyms:**

Tubulin beta-3 chain, Tubulin beta-III, Tubulin beta-4

**Product images:**

Mouse Brain: Formalin-Fixed, Paraffin-Embedded (FFPE)