

Product datasheet for **AP31109PU-N**

Prolyl Endopeptidase (PREP) Goat Polyclonal Antibody

Product data:

Product Type:	Primary Antibodies
Applications:	ELISA, IHC
Recommended Dilution:	Peptide ELISA: Detection Limit: 1/16000. Western Blot: Preliminary experiments gave an approx 45kDa band in Human Brain, Lymph Node, Spleen and Testis lysates after 0.3 µg/ml antibody staining. Please note that currently we cannot find an explanation in the literature for the band we observe given the calculated size of 80.7kDa according to NP_002717.3. The 45kDa band was successfully blocked by incubation with the immunizing peptide. Immunohistochemistry on Paraffin Sections: 3-6 µg/ml. In Paraffin Embedded Human Kidney shows distinct staining patterns in the cytoplasm of PCT.
Reactivity:	Bovine, Canine, Human, Mouse, Porcine, Rat
Host:	Goat
Clonality:	Polyclonal
Immunogen:	Peptide with sequence from the internal region of the protein sequence (NP_002717.3).
Formulation:	Tris saline, pH~7.3 with 0.02% Sodium Azide and 0.5% BSA State: Aff - Purified State: Liquid purified Ig fraction
Concentration:	lot specific
Purification:	Ammonium Sulphate Precipitation followed by Antigen Affinity Chromatography using the immunizing peptide
Conjugation:	Unconjugated
Storage:	Store the antibody undiluted at 2-8°C for one month or (in aliquots) at -20°C for longer. Avoid repeated freezing and thawing.
Stability:	Shelf life: one year from despatch.
Gene Name:	prolyl endopeptidase
Database Link:	Entrez Gene 19072 Mouse Entrez Gene 83471 Rat Entrez Gene 5550 Human P48147



[View online »](#)

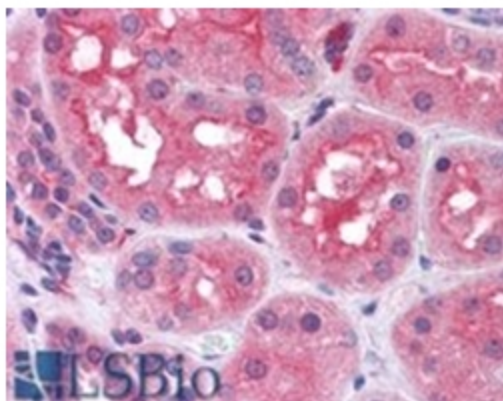
Background: Prolyl Endopeptidase belongs to the peptidase S9A family. Cleaves peptide bonds on the C-terminal side of prolyl residues within peptides that are up to approximately 30 amino acids long.

Synonyms: Prolyl endopeptidase

Note: Calculated Molecular Weight: 80.7kDa (NP_002717.3)

Protein Families: Druggable Genome, Protease

Product images:



PREP antibody staining of Paraffin Embedded Human Kidney at 3.8 ug/ml. Steamed antigen retrieval with citrate buffer pH 6, AP-staining.