

Product datasheet for **AP31101PU-N**

Prostatic Acid Phosphatase (ACPP) (269-282) Goat Polyclonal Antibody

Product data:

Product Type:	Primary Antibodies
Applications:	ELISA, IHC, WB
Recommended Dilution:	Peptide ELISA: Detection Limit: 1/32000. Western Blot: 0.01-0.03 µg/ml. Approx 50kDa band observed in Human Prostate lysates. Immunohistochemistry on Paraffin Sections: 3-5 µg/ml. In paraffin embedded Human Prostate shows reticulate cytoplasm staining, more intens towards the lumen of the gland.
Reactivity:	Human
Host:	Goat
Clonality:	Polyclonal
Immunogen:	Peptide with sequence from the internal region of the protein sequence according to NP_001127666.1, NP_001090.2.
Specificity:	This antibody is expected to recognize both reported isoforms (NP_001127666.1; NP_001090.2).
Formulation:	Tris saline, pH~7.3 State: Aff - Purified State: Liquid purified Ig fraction Stabilizer: 0.5% BSA Preservative: 0.02% Sodium Azide
Concentration:	lot specific
Purification:	Ammonium Sulphate Precipitation followed by Antigen Affinity Chromatography using the immunizing peptide
Conjugation:	Unconjugated
Storage:	Store undiluted at 2-8°C for one month or (in aliquots) at -20°C for longer. Avoid repeated freezing and thawing.
Stability:	Shelf life: one year from despatch.
Gene Name:	acid phosphatase, prostate
Database Link:	Entrez Gene 55 Human P15309



[View online »](#)

Background: Prostatic acid phosphatase is one of the two antigenic markers of prostatic carcinoma, the other being prostate specific antigen. It belongs to the kallikrein family of serine proteases and is suggested to act as a hydrolase to split phospharyl choline in semen and as a transferase.

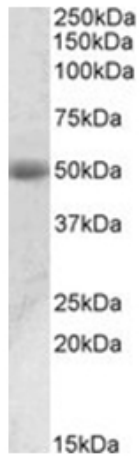
Synonyms: Prostate acid phosphatase, PAP, ACP3, PSAP

Note: **Calculated Molecular Weight:** 48.3kDa (NP_001127666.1).

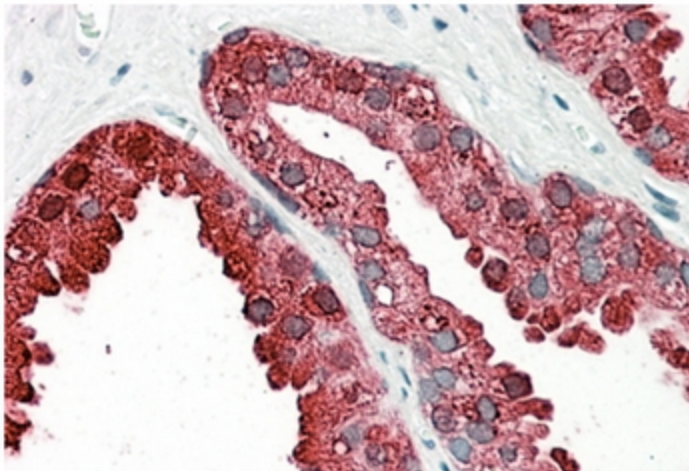
Protein Families: Druggable Genome, Phosphatase, Transmembrane

Protein Pathways: Riboflavin metabolism

Product images:



ACPP antibody staining of Human Prostate lysate at 0.01 ug/ml (35 ug protein in RIPA buffer). Primary incubation was 1 hour. Detected by chemiluminescence.



ACPP antibody staining of paraffin embedded Human Prostate at 3.8 ug/ml. Steamed antigen retrieval with citrate buffer pH 6, AP-staining.