

## Product datasheet for **AP31073PU-N**

### **EVC2 (1296-1308) Goat Polyclonal Antibody**

#### **Product data:**

Product Type:	Primary Antibodies
Applications:	ELISA, IHC
Recommended Dilution:	<b>ELISA:</b> 1/16000. <b>Immunohistochemistry on Paraffin Sections:</b> 3.75 µg/ml.
Reactivity:	Human
Host:	Goat
Clonality:	Polyclonal
Immunogen:	Synthetic peptide from the C-terminus of human EVC2 (NP_667338.3; NP_001159608.1)
Specificity:	This antibody recognizes EVC2 (C-term). It is expected to recognise isoform 1 (NP_667338.3) and isoform 2 (NP_001159608.1).
Formulation:	Tris saline buffer, pH 7.3 containing 0.5% BSA as stabilizer and 0.02% Sodium Azide as preservative State: Aff - Purified State: Liquid purified IgG fraction
Concentration:	lot specific
Purification:	Immunoaffinity Chromatography
Conjugation:	Unconjugated
Storage:	Store the antibody (in aliquots) at -20°C. Avoid repeated freezing and thawing.
Stability:	Shelf life: one year from despatch.
Gene Name:	EvC ciliary complex subunit 2
Database Link:	<a href="#">Entrez Gene 132884 Human Q86UK5</a>



[View online »](#)

**Background:**

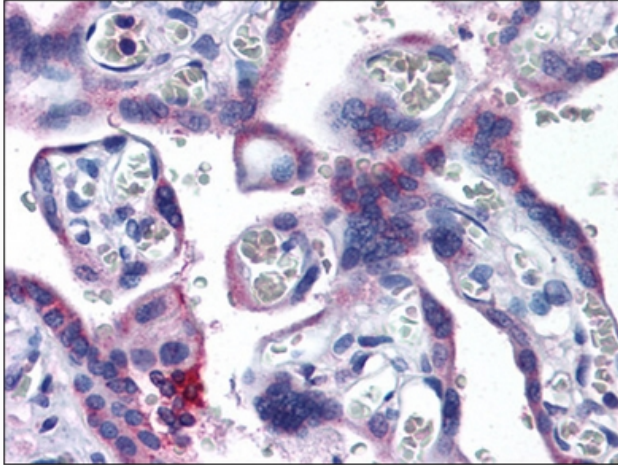
EVC2 is a protein that functions in bone formation and skeletal development. Mutations in this gene, as well as in a neighboring gene that lies in a head-to-head configuration, cause Ellis-van Creveld syndrome, an autosomal recessive skeletal dysplasia that is also known as chondroectodermal dysplasia. Mutations in this gene also cause acrofacial dysostosis Weyers type, also referred to as Curry-Hall syndrome, a disease that combines limb and facial abnormalities.

**Synonyms:**

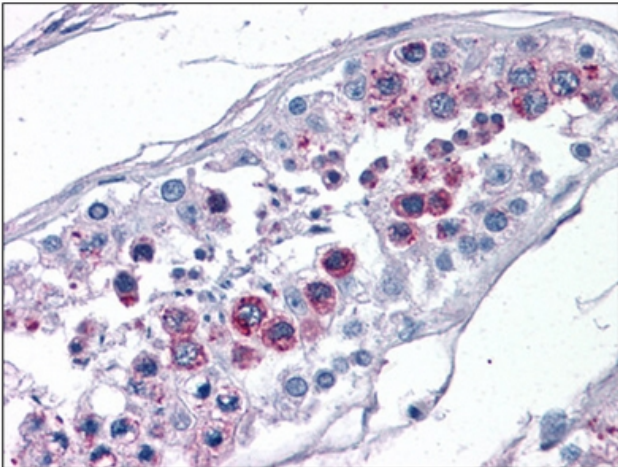
EVC2, LBN

**Protein Families:**

Transmembrane

**Product images:**

Human Placenta: Formalin-Fixed, Paraffin-Embedded (FFPE)



Human Testis: Formalin-Fixed, Paraffin-Embedded (FFPE)