

Product datasheet for **AP31064PU-N**

BAG5 (N-term) Goat Polyclonal Antibody

Product data:

Product Type:	Primary Antibodies
Applications:	ELISA, IHC, WB
Recommended Dilution:	Peptide ELISA: Detection Limit: 1/64000. Western Blot: 1-3 µg/ml. Approx 55+48kDa bands observed in nuclear lysates of cell line HeLa (calculated MW of 56.0kDa according to NP_001015049.1 and of 51.2kDa according to NP_004864.1; NP_001015048.1). Immunohistochemistry on Paraffin Sections: 3.75 µg/ml. <i>Positive Control:</i> Human Testis.
Reactivity:	Bovine, Canine, Human, Mouse, Rat
Host:	Goat
Clonality:	Polyclonal
Immunogen:	Peptide with sequence from the N Terminus of the protein sequence according to NP_001015049.1; NP_004864.1; NP_001015048.1.
Specificity:	This antibody detects BAG5 (N Terminus).
Formulation:	Tris saline, pH 7.3 containing 0.02% Sodium Azide as preservative and 0.5% BSA as stabilizer. State: Aff - Purified State: Liquid purified IgG fraction.
Concentration:	lot specific
Purification:	Ammonium Sulphate Precipitation followed by antigen Affinity Chromatography using the immunizing peptide.
Conjugation:	Unconjugated
Storage:	Store undiluted at 2-8°C for one month or (in aliquots) at -20°C for longer. Avoid repeated freezing and thawing.
Stability:	Shelf life: one year from despatch.
Gene Name:	BCL2 associated athanogene 5
Database Link:	Entrez Gene 70369 Mouse Entrez Gene 366734 Rat Entrez Gene 9529 Human Q9UL15
Synonyms:	BAG-5, KIAA0873

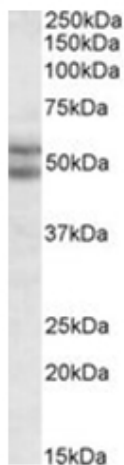


[View online »](#)

Note: Predicted Molecular Weight: 56.0kDa (NP_001015049.1) and 51.2kDa (NP_004864.1; NP_001015048.1).

Protein Families: Druggable Genome

Product images:



BAG5 antibody staining of nuclear HeLa lysate at 2 ug/ml (35ug protein in RIPA buffer). Primary incubation was 1 hour. Detected by chemiluminescence.