

## Product datasheet for **AP31062PU-N**

### **p114RhoGEF (ARHGEF18) (C-term) Goat Polyclonal Antibody**

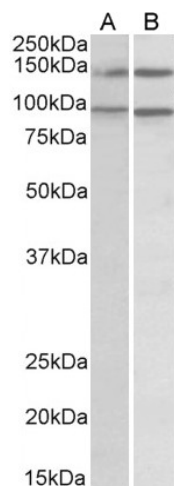
#### Product data:

Product Type:	Primary Antibodies
Applications:	ELISA, WB
Recommended Dilution:	<b>Peptide ELISA:</b> 1/128000 (Detection Limit). <b>Western Blot:</b> This antibody has been successfully used for Caco-2, HCE and MDCK cells as described by <i>Terry SJ et al in Reference 1</i> .
Reactivity:	Canine, Human
Host:	Goat
Clonality:	Polyclonal
Immunogen:	Peptide with sequence from the C Terminus of the protein sequence according to NP_056133.2; NP_001124427.1.
Specificity:	This antibody is expected to recognize both reported isoforms (NP_056133.2; NP_001124427.1).
Formulation:	Tris saline, pH 7.3 containing 0.02% Sodium Azide as preservative and 0.5% BSA as stabilizer. State: Aff - Purified State: Liquid purified IgG fraction.
Concentration:	lot specific
Purification:	Ammonium Sulphate Precipitation followed by antigen Affinity Chromatography using the immunizing peptide.
Conjugation:	Unconjugated
Storage:	Store undiluted at 2-8°C for one month or (in aliquots) at -20°C for longer. Avoid repeated freezing and thawing.
Stability:	Shelf life: one year from despatch.
Gene Name:	Rho/Rac guanine nucleotide exchange factor 18
Database Link:	<a href="#">Entrez Gene 23370 Human Q6ZS75</a>
Synonyms:	KIAA0521, p114-Rho-GEF



[View online »](#)

## Product images:



AP31062PU-N (0.5ug/ml) staining of lysates of cell lines Daudi (A) and Caco-2 (B) (35ug protein in RIPA buffer). Primary incubation was 1 hour. Detected by chemiluminescence.