

Product datasheet for **AP31057PU-N**

TRIP (TRAIP) (C-term) Goat Polyclonal Antibody

Product data:

Product Type:	Primary Antibodies
Applications:	ELISA, IHC, WB
Recommended Dilution:	Peptide ELISA: 1/1000 (Detection Limit). Western Blot: 2.0 µg/ml. Approx.50kDa band observed in Human Testis lysates. An additional band of unknown identity was also consistently observed at 38kDa. This band was successfully blocked by incubation with the immunizing peptide. Immunohistochemistry on Paraffin Sections: 4-6 µg/ml. In paraffin embedded Human Spleen shows perinuclear and textured cytoplasmic staining in selective areas.
Reactivity:	Human
Host:	Goat
Clonality:	Polyclonal
Immunogen:	Peptide with sequence from the C-Terminus of the protein sequence according to NP_005870.2.
Specificity:	This antibody detects TRIP / TRAIP
Formulation:	Tris saline, pH 7.3 State: Aff - Purified State: Liquid purified IgG fraction. Stabilizer: 0.5% BSA Preservative: 0.02% Sodium Azide
Concentration:	lot specific
Purification:	Ammonium Sulphate Precipitation followed by antigen Affinity Chromatography using the immunizing peptide.
Conjugation:	Unconjugated
Storage:	Store the antibody undiluted at 2-8°C for one month or (in aliquots) at -20°C for longer. Avoid repeated freezing and thawing.
Stability:	Shelf life: one year from despatch.
Predicted Protein Size:	53.3 kDa (NP_005870.2).
Gene Name:	TRAF interacting protein



[View online »](#)

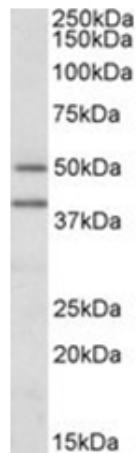
Database Link: [Entrez Gene 10293 Human Q9BWF2](#)

Background: TRAIP is a protein that contains an N-terminal RING finger motif and a putative coiled-coil domain. A similar murine protein interacts with TNFR-associated factor 1 (TRAF1), TNFR-associated factor 2 (TRAF2), and cylindromatosis. The interaction with TRAF2 inhibits TRAF2-mediated nuclear factor kappa-B, subunit 1 activation that is required for cell activation and protection against apoptosis.

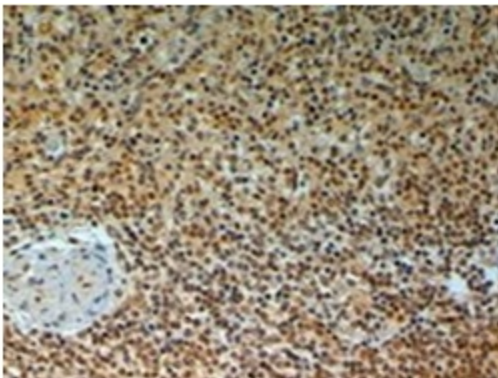
Synonyms: TRIP, TRAF-interacting protein

Protein Families: Druggable Genome, Stem cell - Pluripotency

Product images:



TRAIP antibody staining of Human Testis lysate at 2 ug/ml (35ug protein in RIPA buffer). Primary incubation was 1 hour. Detected by chemiluminescence.



TRAIP antibody staining of paraffin embedded Human Spleen at 4 ug/ml. Steamed antigen retrieval with citrate buffer pH 6, HRP-staining.