

Product datasheet for **AP31052PU-N**

Dysferlin (DYSF) (C-term) Rabbit Polyclonal Antibody

Product data:

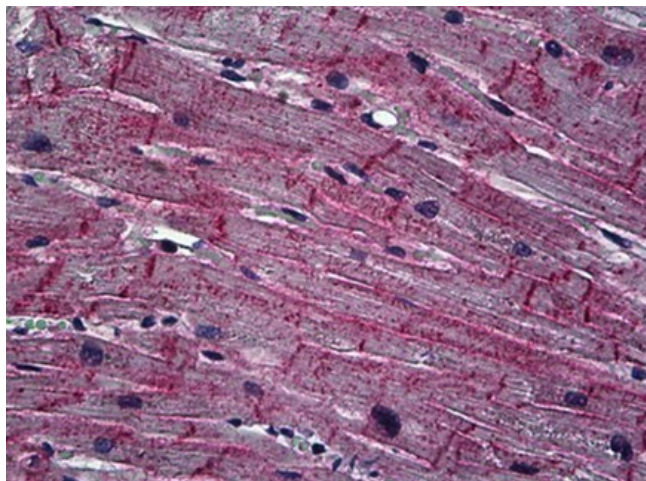
Product Type:	Primary Antibodies
Applications:	IHC, WB
Recommended Dilution:	Immunohistochemistry on Paraffin Sections: 1/50. Western Blot: 1 µg/ml.
Reactivity:	Human
Host:	Rabbit
Isotype:	IgG
Clonality:	Polyclonal
Immunogen:	A synthetic peptide corresponding to C-terminal of human Dysferlin
Specificity:	This antibody reacts to Dysferlin, Limb Girdle Muscular Dystrophy 2b (AUTOSOMAL RECESSIVE) (DYSF).
Formulation:	10 mM PBS, pH 7.4 containing BSA as stabilizer and 0,09% sodium azide as preservative State: Purified State: Liquid purified Ig fraction
Purification:	Immunoaffinity Chromatography
Conjugation:	Unconjugated
Storage:	Store the antibody undiluted at 2-8°C. DO NOT FREEZE!
Stability:	Shelf life: one year from despatch.
Gene Name:	dysferlin
Database Link:	Entrez Gene 8291 Human O75923
Background:	Dysferlin is the protein product of the 2p13 gene that is defective in patients with Limb-Girdle Muscular Dystrophy type 2B (LGMD2B) and Miyoshi Myopathy (MM). Dysferlin is normally localized to the muscle plasma membrane. In patients with LGMD2B and MM, immunoreactivity to dysferlin is severely reduced or lost, depending on the type of mutation. This antibody is used for the characterization of LGMD2B and MM.
Synonyms:	Fer-1-like protein 1, DYSF, FER1L1



[View online »](#)

Protein Families: Transmembrane

Product images:



Human Heart: Formalin-Fixed, Paraffin-Embedded (FFPE)