

Product datasheet for **AP31050PU-N**

MCL1 (121-139) Rabbit Polyclonal Antibody

Product data:

Product Type:	Primary Antibodies
Applications:	IHC
Recommended Dilution:	Immunohistochemistry on Paraffin Sections: 1/25 - 1/100.
Reactivity:	Human
Host:	Rabbit
Isotype:	IgG
Clonality:	Polyclonal
Immunogen:	A synthetic peptide corresponding to aa 121-139 of human Mcl-1
Specificity:	This antibody reacts to Induced Myeloid Leukemia Cell Differentiation Protein Mcl-1 (MCL1).
Formulation:	10 mM PBS, pH 7.4 containing 1% BSA as stabilizer and 0,09% sodium azide as preservative State: Purified State: Liquid purified Ig fraction
Purification:	Immunoaffinity Chromatography
Conjugation:	Unconjugated
Storage:	Store the antibody undiluted at 2-8°C. DO NOT FREEZE!
Stability:	Shelf life: one year from despatch.
Gene Name:	myeloid cell leukemia 1
Database Link:	Entrez Gene 4170 Human Q07820



[View online »](#)

Background:

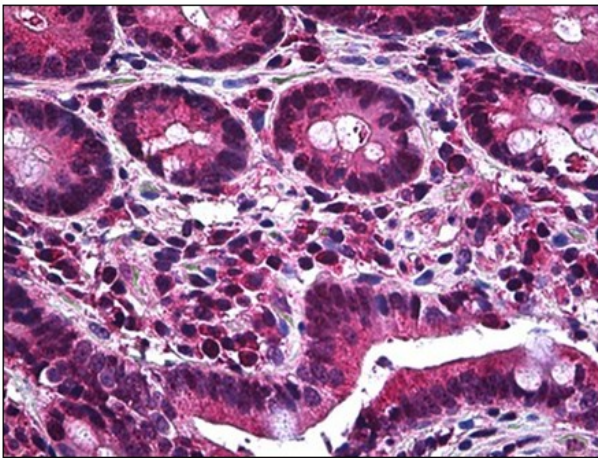
Myeloid cell leukemia-1 (Mcl-1) is a member of the Bcl-2 family of proteins that can act to promote cell survival. While the mechanism by which Mcl-1 inhibits apoptosis is not known, it is thought that it may heterodimerize and neutralize pro-apoptotic members of the Bcl-2 family such as Bim or Bak. Mcl-1 was originally identified in differentiating myeloid cells, but has since been shown to be expressed in multiple cell types. Mcl-1 is essential for embryogenesis (5) and for the development and maintenance of B and T lymphocytes in animals. Mcl-1 exists as at least two distinct isoforms designated Mcl-1L and Mcl-1S. In marked contrast to the larger isoform of Mcl-1, overexpression of Mcl-1S promotes cell death.

Synonyms:

BCL2L3, Bcl-2-like protein 3, mcl1/EAT, EAT, r004

Protein Families:

Druggable Genome, Transmembrane

Product images:

Human Small Intestine: Formalin-Fixed, Paraffin-Embedded (FFPE)