

Product datasheet for **AP31048PU-N**

Cytokeratin 14 (KRT14) (C-term) Rabbit Polyclonal Antibody

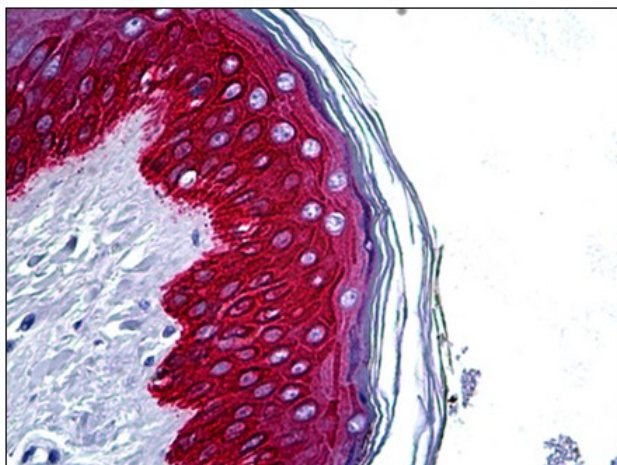
Product data:

Product Type:	Primary Antibodies
Applications:	IHC
Recommended Dilution:	Immunohistochemistry on Paraffin Sections: 1/50.
Reactivity:	Human
Host:	Rabbit
Isotype:	IgG
Clonality:	Polyclonal
Immunogen:	A synthetic peptide derived from C-terminal of human Keratin 14
Specificity:	Keratin 14 belongs to the type A (acidic) subfamily of low molecular weight keratins and exists in combination with keratin 5. Keratin 14 has been studied as a prognostic marker in breast cancer.
Formulation:	10 mM PBS, pH 7.4 containing BSA as stabilizer and 0,09% sodium azide as preservative State: Purified State: Liquid purified Ig fraction
Purification:	Immunoaffinity Chromatography
Conjugation:	Unconjugated
Storage:	Store the antibody undiluted at 2-8°C. DO NOT FREEZE!
Stability:	Shelf life: one year from despatch.
Gene Name:	keratin 14
Database Link:	Entrez Gene 3861 Human P02533
Synonyms:	Cytokeratin-14, CK14, Keratin 14, K14, KRT14



[View online »](#)

Product images:



Human Skin: Formalin-Fixed, Paraffin-Embedded (FFPE)