

Product datasheet for **AP31046PU-N**

alpha smooth muscle Actin (ACTA2) (N-term) Rabbit Polyclonal Antibody

Product data:

Product Type:	Primary Antibodies
Applications:	IHC
Recommended Dilution:	Immunohistochemistry on Paraffin Sections: 1/100.
Reactivity:	Bovine, Chicken, Human, Monkey, Mouse, Rabbit, Rat, Baboon
Host:	Rabbit
Isotype:	IgG
Clonality:	Polyclonal
Immunogen:	A synthetic peptide from N-terminus of Human alpha smooth muscle isoform of Actin
Specificity:	This antibody stains smooth muscle cells in vessel walls, gut wall, and myometrium. Myoepithelial cells in breast and salivary gland are also stained. It reacts with tumors arising from smooth muscles and myoepithelial cells. Actin from fibroblasts (beta- and gamma-cytoplasmic), striated muscle (alpha-sarcomeric), and myocardium (alpha-myocardial) are not labeled.
Formulation:	10 mM PBS, pH 7.4 State: Purified State: Liquid purified Ig fraction Stabilizer: BSA Preservative: 0.09% Sodium Azide
Purification:	Immunoaffinity Chromatography
Conjugation:	Unconjugated
Storage:	Store the antibody undiluted at 2-8°C. DO NOT FREEZE!
Stability:	Shelf life: one year from despatch.
Gene Name:	actin, alpha 2, smooth muscle, aorta
Database Link:	Entrez Gene 11475 Mouse Entrez Gene 81633 Rat Entrez Gene 100427024 Monkey Entrez Gene 59 Human P62736



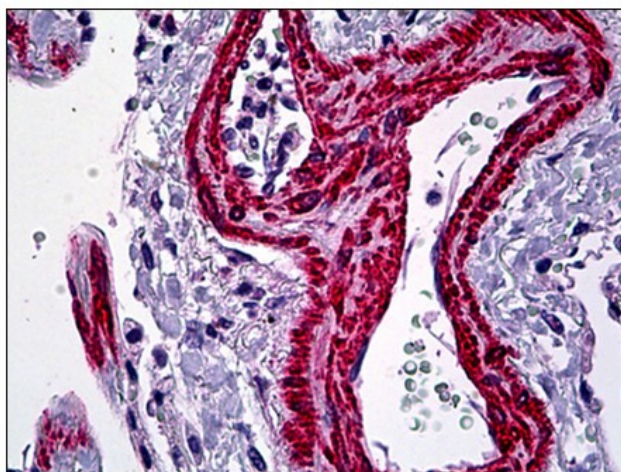
[View online »](#)

Background: Actin alpha 2, the human aortic smooth muscle actin gene, is one of six different actin isoforms which have been identified. Actins are highly conserved proteins that are involved in cell motility, structure and integrity. Alpha actins are a major constituent of the contractile apparatus.

Synonyms: ACTSA, ACTVS, Alpha-actin-2

Protein Pathways: Vascular smooth muscle contraction

Product images:



Human Lung, Vessels: Formalin-Fixed, Paraffin-Embedded (FFPE)