

Product datasheet for **AP31039PU-N**

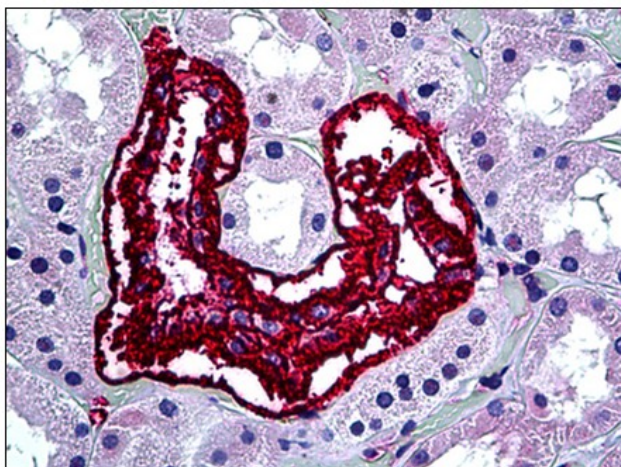
Inhibin alpha (INHA) Rabbit Polyclonal Antibody

Product data:

Product Type:	Primary Antibodies
Applications:	IHC
Recommended Dilution:	Immunohistochemistry on Paraffin Sections: 1/50.
Reactivity:	Human
Host:	Rabbit
Isotype:	IgG
Clonality:	Polyclonal
Immunogen:	Synthetic peptide corresponding to human inhibin alpha
Specificity:	This antibody reacts to Inhibin, Alpha (INHA).
Formulation:	10 mM PBS, pH 7.4 containing BSA as stabilizer and 0,09 sodium azide as preservative State: Purified State: Liquid purified Ig fraction
Purification:	Immunoaffinity Chromatography
Conjugation:	Unconjugated
Storage:	Store the antibody undiluted at 2-8°C. DO NOT FREEZE!
Stability:	Shelf life: one year from despatch.
Gene Name:	inhibin alpha subunit
Database Link:	Entrez Gene 3623 Human P05111
Background:	Inhibin is a dimeric glycoprotein hormone from TGF-beta family made up of alpha and beta subunits. It inhibits the production of follicle-stimulating hormone from pituitary while activin stimulates the production of FSH. It is suggested that inhibin may act as a gonadal tumor suppressor.
Synonyms:	INHA
Protein Families:	Druggable Genome, Secreted Protein



[View online »](#)

Product images:

Human Kidney: Formalin-Fixed, Paraffin-Embedded (FFPE)