

Product datasheet for **AP31032PU-N**

NOTCH1 (C-term) Rabbit Polyclonal Antibody

Product data:

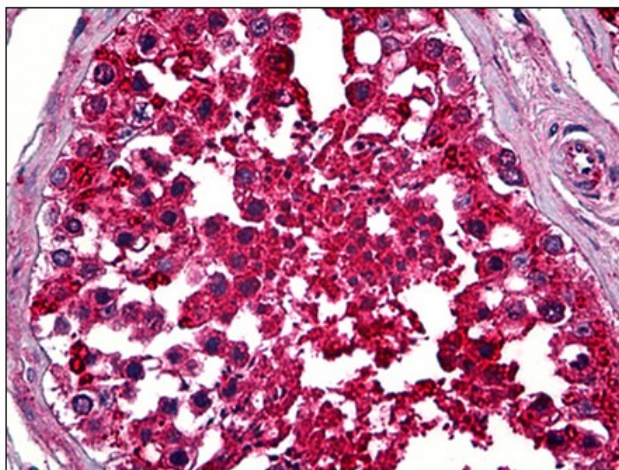
Product Type:	Primary Antibodies
Applications:	IHC
Recommended Dilution:	Immunohistochemistry on Paraffin Sections: 1/50.
Reactivity:	Human
Host:	Rabbit
Isotype:	IgG
Clonality:	Polyclonal
Immunogen:	A synthetic peptide from C-terminal of human notch-1
Specificity:	This antibody reacts to the C-term of Notch Homolog 1, Translocation-associated (NOTCH1).
Formulation:	10 mM PBS, pH 7.4 containing BSA as stabilizer and 0,09% sodium azide as preservative State: Purified State: Liquid purified Ig fraction
Purification:	Immunoaffinity Chromatography
Conjugation:	Unconjugated
Storage:	Store the antibody undiluted at 2-8°C. DO NOT FREEZE!
Stability:	Shelf life: one year from despatch.
Gene Name:	notch 1
Database Link:	Entrez Gene 4851 Human P46531
Background:	The 280-330kDa Notch proteins have been found to be overexpressed or rearranged in human tumors ligands for Notch include Jagged, Jagged-2 and Delta. Jagged can activate Notch and prevent myoblast differentiation by inhibiting the expression of muscle regulatory and structural genes.
Synonyms:	Notch 1, hN1, TAN1
Protein Families:	Adult stem cells, Cancer stem cells, Druggable Genome, ES Cell Differentiation/IPS, Stem cell relevant signaling - DSL/Notch pathway



[View online »](#)

Protein Pathways: Dorso-ventral axis formation, Notch signaling pathway, Prion diseases

Product images:



Human Testis: Formalin-Fixed, Paraffin-Embedded (FFPE)