

Product datasheet for **AP31031PU-N**

Claudin 7 (CLDN7) (C-term) Rabbit Polyclonal Antibody

Product data:

Product Type:	Primary Antibodies
Applications:	IHC
Recommended Dilution:	Immunohistochemistry on Paraffin Sections: 1/25.
Reactivity:	Human, Mouse, Rat
Host:	Rabbit
Isotype:	IgG
Clonality:	Polyclonal
Immunogen:	A synthetic peptide from C-terminus of human claudin 7 protein
Specificity:	This antibody reacts to the C-term of Claudin 7 (CLDN7).
Formulation:	10 mM PBS, pH 7.4 containing BSA as stabilizer and 0,09% sodium azide as preservative State: Purified State: Liquid purified Ig fraction
Concentration:	lot specific
Purification:	Immunoaffinity Chromatography
Conjugation:	Unconjugated
Storage:	Store the antibody undiluted at 2-8°C. DO NOT FREEZE!
Stability:	Shelf life: one year from despatch.
Gene Name:	claudin 7
Database Link:	Entrez Gene 53624 Mouse Entrez Gene 65132 Rat Entrez Gene 1366 Human O95471
Background:	The claudin superfamily consists of many structurally related proteins in humans. These proteins, which include claudin 1 through 18, are important structural and functional components of tight junctions in paracellular transport. Claudins are located in both epithelial and endothelial cells in all tight junction-bearing tissues. Claudins, which consist of four trans-membrane domains and two extracellular loops, make up tight junction strands.
Synonyms:	CLDN-7, CEPTRL2, CPETRL2

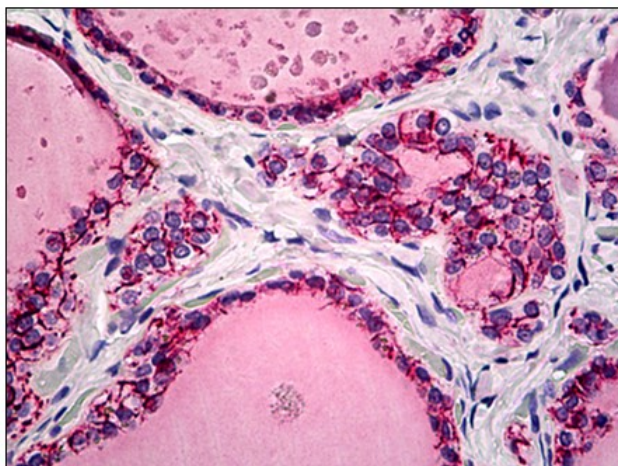


[View online »](#)

Protein Families: Transmembrane

Protein Pathways: Cell adhesion molecules (CAMs), Leukocyte transendothelial migration, Tight junction

Product images:



Human Thyroid: Formalin-Fixed, Paraffin-Embedded (FFPE)