

Product datasheet for **AP31026PU-N**

MMP13 Rabbit Polyclonal Antibody

Product data:

Product Type:	Primary Antibodies
Applications:	IHC, WB
Recommended Dilution:	Immunohistochemistry on Paraffin Sections: 20 µg/ml. Western Blot: 1/25 - 1/50, 2.5 - 5 µg/ml.
Reactivity:	Human, Rat
Host:	Rabbit
Isotype:	IgG
Clonality:	Polyclonal
Immunogen:	Human recombinant MMP-13 protein
Specificity:	This antibody reacts to Matrix Metalloproteinase 13 (MMP13/Collagenase3).
Formulation:	10mM PBS, pH 7.4 containing 0.2% BSA as stabilizer and 0.09% Sodium Azide as preservative State: Purified State: Liquid purified Ig fraction
Concentration:	lot specific
Purification:	Protein A Chromatography
Conjugation:	Unconjugated
Storage:	Store the antibody undiluted at 2-8°C.
Stability:	Shelf life: one year from despatch.
Gene Name:	matrix metalloproteinase 13
Database Link:	Entrez Gene 171052 Rat Entrez Gene 4322 Human P45452
Background:	MMP13 is a Metalloproteinase M10A type protease. Metalloproteinase 13/Collagenase 3 (MMP13) was originally identified in breast carcinoma and has since been documented in a variety of tumors including chondrosarcomas, basal cell carcinoma, and malignant melanoma. In addition it has been detected in inflammatory diseases such as atherosclerosis, in wound healing, and in destructive joint diseases such as OA and RA. MMP13 degrades the native helix of several types of fibrillar collagen, and extracellular matrix proteins in vitro.
Synonyms:	Collagenase 3, MMP13, Matrix metalloproteinase-13

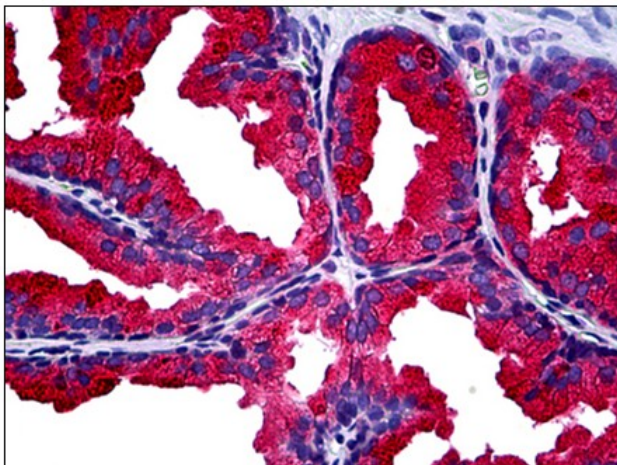


[View online »](#)

Note: Molecular Weight: ~60kDa (pro form) and ~48kDa (active form)
Cellular Localization: Cytoplasmic

Protein Families: Druggable Genome, Protease

Product images:



Human Prostate: Formalin-Fixed, Paraffin-Embedded (FFPE)