

Product datasheet for **AP31024PU-N**

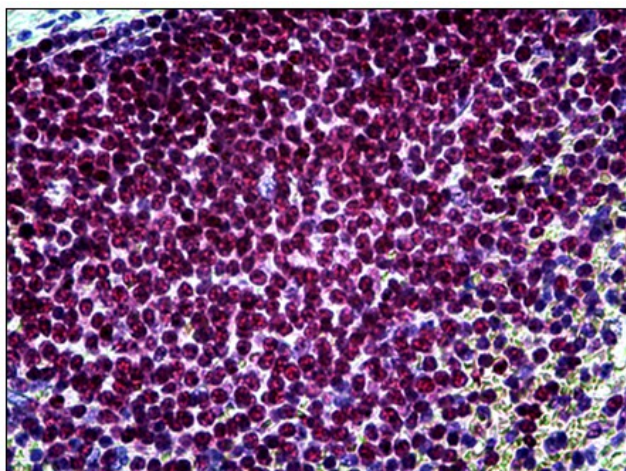
PARP1 (N-term) Rabbit Polyclonal Antibody

Product data:

Product Type:	Primary Antibodies
Applications:	IHC, WB
Recommended Dilution:	Immunohistochemistry on Paraffin Sections: 10 µg/ml. Western Blot: 5 - 10 µg/ml.
Reactivity:	Human, Mouse, Rat
Host:	Rabbit
Isotype:	IgG
Clonality:	Polyclonal
Immunogen:	A synthetic peptide for the N-terminal region of human PARP.
Specificity:	This antibody reacts to the N-term of Poly (ADP-ribose) Polymerase Family, Member 1 (PARP1).
Formulation:	10mM PBS, pH 7.4 containing 0.2% BSA as stabilizer and 0.09% Sodium Azide as preservative State: Purified State: Liquid purified Ig fraction
Concentration:	lot specific
Purification:	Protein A Chromatography
Conjugation:	Unconjugated
Storage:	Store the antibody undiluted at 2-8°C.
Stability:	Shelf life: one year from despatch.
Gene Name:	poly(ADP-ribose) polymerase 1
Database Link:	Entrez Gene 11545 Mouse Entrez Gene 25591 Rat Entrez Gene 142 Human P09874
Synonyms:	PARP-1, ADPRT, ADPRT 1, PPOL
Note:	Molecular Weight: 116kDa Cellular localization: Nuclear
Protein Families:	Druggable Genome, Stem cell - Pluripotency, Transcription Factors
Protein Pathways:	Base excision repair



[View online »](#)

Product images:

Human Spleen: Formalin-Fixed, Paraffin-Embedded (FFPE)