

## Product datasheet for **AP31023PU-N**

### **Ki67 (MKI67) Rabbit Polyclonal Antibody**

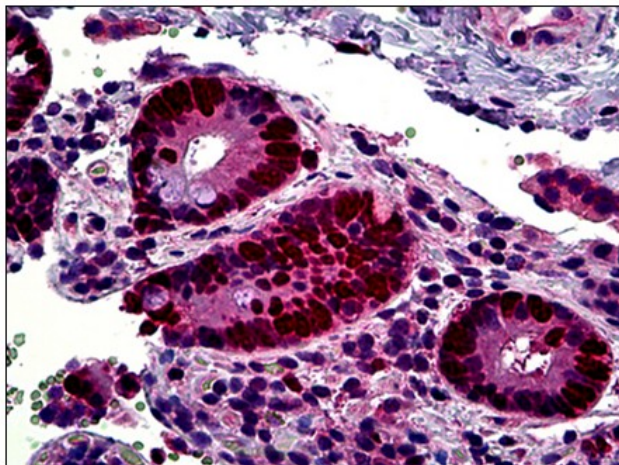
#### **Product data:**

Product Type:	Primary Antibodies
Applications:	IHC
Recommended Dilution:	<b>Immunohistochemistry on Paraffin Sections:</b> 5 µg/ml.
Reactivity:	Human, Rat
Host:	Rabbit
Isotype:	IgG
Clonality:	Polyclonal
Immunogen:	A synthetic peptide from the human Ki67 protein.
Specificity:	This antibody reacts to Antigen Ki-67 (KI67).
Formulation:	10mM PBS, pH 7.4 containing 0.2% BSA as stabilizer and 0.09% Sodium Azide as preservative State: Purified State: Liquid purified IgG fraction
Concentration:	lot specific
Purification:	Protein A Chromatography
Conjugation:	Unconjugated
Storage:	Store the antibody undiluted at 2-8°C.
Stability:	Shelf life: one year from despatch.
Gene Name:	marker of proliferation Ki-67
Database Link:	<a href="#">Entrez Gene 291234 Rat</a> <a href="#">Entrez Gene 4288 Human</a> <a href="#">P46013</a>
Synonyms:	Ki67 antigen, MKI67, Proliferation marker
Note:	Cellular localization: Nuclear
Protein Families:	Druggable Genome, ES Cell Differentiation/IPS



[View online »](#)

**Product images:**



Human Small Intestine: Formalin-Fixed, Paraffin-Embedded (FFPE)