

Product datasheet for **AP31015PU-N**

CLCN2 (738-751) Goat Polyclonal Antibody

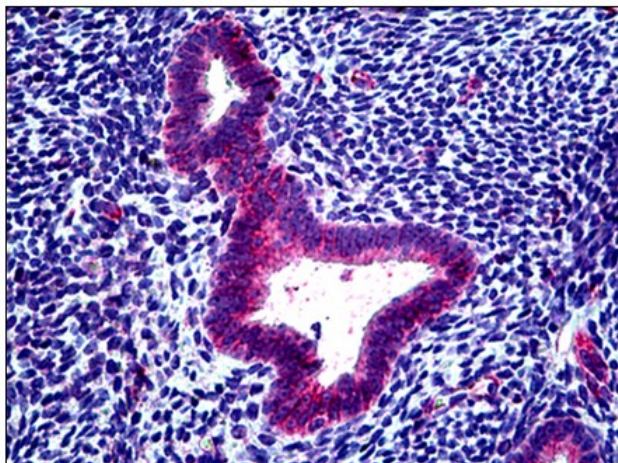
Product data:

Product Type:	Primary Antibodies
Applications:	IHC
Recommended Dilution:	Immunohistochemistry on Paraffin Sections: 3.75 - 7.5 µg/ml.
Reactivity:	Human
Host:	Goat
Isotype:	IgG
Clonality:	Polyclonal
Immunogen:	Synthetic peptide from positions 738-751 of human CLCN2 (NP_004357.3)
Specificity:	This antibody reacts to Chloride Channel Protein 2 (CLCN2) at aa 738-751.
Formulation:	Tris saline buffer, pH 7.3 containing 0.5% BSA as stabilizer and 0.02% sodium azide as preservative State: Aff - Purified State: Liquid purified Ig fraction
Concentration:	lot specific
Purification:	Immunoaffinity Chromatography
Conjugation:	Unconjugated
Storage:	Upon receipt, store undiluted (in aliquots) at -20°C. Avoid repeated freezing and thawing.
Stability:	Shelf life: one year from despatch.
Gene Name:	chloride voltage-gated channel 2
Database Link:	Entrez Gene 1181 Human P51788
Background:	Clcn2, a member of the CLC chloride channel subfamily, has been implicated in the regulation of cell volume and neuronal excitability.
Synonyms:	Chloride channel protein 2, CLC3, CIC-2, CIC2
Protein Families:	Druggable Genome, Ion Channels: Other, Transmembrane



[View online »](#)

Product images:



Human Uterus: Formalin-Fixed, Paraffin-Embedded (FFPE)