

Product datasheet for **AP31012PU-N**

KCNN4 (227-239) Goat Polyclonal Antibody

Product data:

Product Type:	Primary Antibodies
Applications:	IHC
Recommended Dilution:	Immunohistochemistry on Paraffin Sections: 3.75 - 7.5 µg/ml.
Reactivity:	Human, Bovine, Canine, Rabbit
Host:	Goat
Isotype:	IgG
Clonality:	Polyclonal
Immunogen:	Synthetic peptide from positions 227-239 of human KCNN4 (NP_002241.1)
Specificity:	This antibody reacts to Potassium Intermediate/Small Conductance Calcium-Activated Channel, Subfamily N, Member 4 (Kcnn4) at aa 227-239.
Formulation:	Tris saline buffer, pH 7.3 containing 0.5% BSA as stabilizer and 0.02% sodium azide as preservative State: Aff - Purified State: Liquid purified Ig fraction
Concentration:	lot specific
Purification:	Immunoaffinity Chromatography
Conjugation:	Unconjugated
Storage:	Upon receipt, store undiluted (in aliquots) at -20°C. Avoid repeated freezing and thawing.
Stability:	Shelf life: one year from despatch.
Gene Name:	potassium calcium-activated channel subfamily N member 4
Database Link:	Entrez Gene 3783 Human O15554
Background:	Forms a voltage-independent potassium channel that is activated by intracellular calcium. Activation is followed by membrane hyperpolarization which promotes calcium influx. Required for maximal calcium influx and proliferation during the reactivation of naive T-cells. The channel is blocked by clotrimazole and charybdotoxin but is insensitive to apamin.
Synonyms:	KCNN4, IK1, IKCA1, KCA4, SK4, KCa3.1, Putative Gardos channel

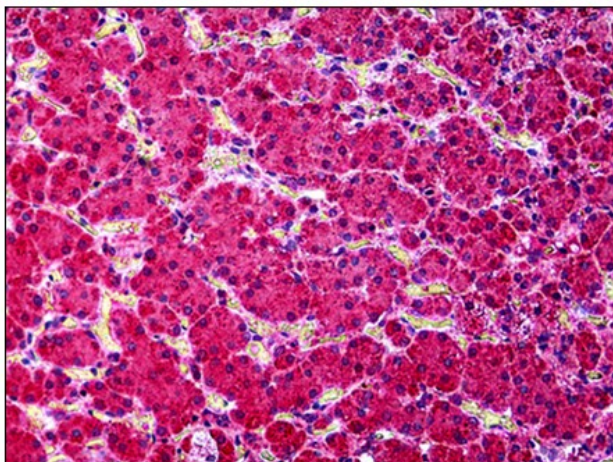


[View online »](#)

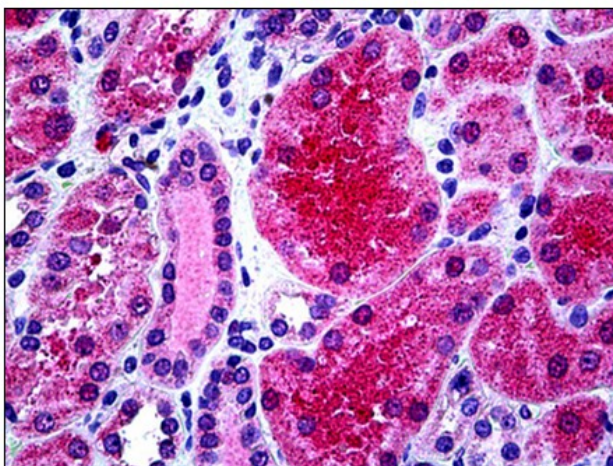
Note: The Kcnn4 synonym, IK1, also is used to describe the cardiac inward rectifier current.

Protein Families: Druggable Genome, Ion Channels: Potassium, Transmembrane

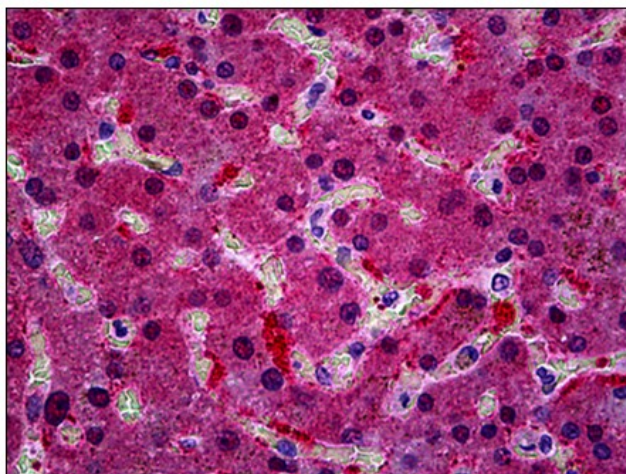
Product images:



Human Adrenal: Formalin-Fixed, Paraffin-Embedded (FFPE)



Human Kidney: Formalin-Fixed, Paraffin-Embedded (FFPE)



Human Liver: Formalin-Fixed, Paraffin-Embedded (FFPE)