

## Product datasheet for **AP26453RP-N**

### Mannose Receptor (MRC1) Mouse Monoclonal Antibody [Clone ID: 15-2]

#### Product data:

Product Type:	Primary Antibodies
Clone Name:	15-2
Applications:	FC
Recommended Dilution:	<b>Flow Cytometry analysis</b> of human blood cells using 10 µl reagent / 100 µl of whole blood or 10 <sup>6</sup> cells in a suspension. The content of a vial (1 ml) is sufficient for 100 tests.
Reactivity:	Human
Host:	Mouse
Isotype:	IgG1
Clonality:	Monoclonal
Immunogen:	Purified human mannose receptor
Specificity:	This antibody clone 15-2 (also known as MR15-2) recognizes CD206 (macrophage mannose receptor, MMR), a 162-175 kDa type I transmembrane protein expressed mainly on macrophages, dendritic cells and hepatic or lymphatic endothelial cells, but not on monocytes.
Formulation:	Phosphate buffered saline (PBS) containing 15 mM sodium azide and 0.2% (w/v) high-grade protease free Bovine Serum Albumin (BSA) as a stabilizing agent. Label: PE State: Liquid purified Ig fraction Label: Conjugated with R-Phycoerythrin (PE) under optimum conditions. The conjugate is purified by size-exclusion chromatography and adjusted for direct use.
Conjugation:	PE
Storage:	Store the antibody undiluted at 2-8°C. <b>DO NOT FREEZE!</b> This product is photosensitive and should be protected from light.
Stability:	Shelf life: one year from despatch.
Gene Name:	mannose receptor, C type 1
Database Link:	<a href="#">Entrez Gene 4360 Human P22897</a>



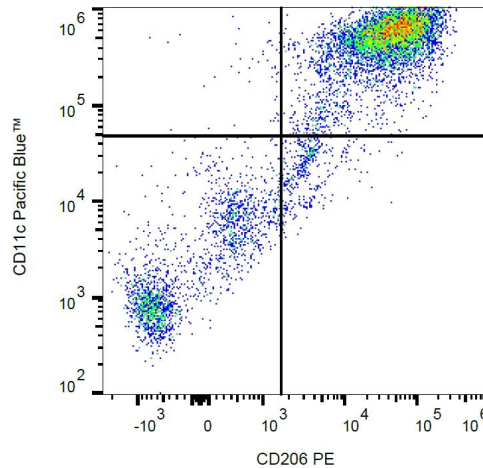
[View online »](#)

**Background:**

CD206 (macrophage mannose receptor, MMR), also known as mannose receptor C1 (MRC1), is a type I transmembrane glycoprotein serving as pattern recognition receptor for carbohydrate groups on the surface of bacteria, fungi and other pathogens. Expressed mainly on tissue macrophages and dendritic cells, CD206 mediates endocytosis of these pathogens and presentation of their antigens to the adaptive immune system. CD206 can also be detected in a soluble form in human plasma and is elevated in patients with acute sepsis.

**Synonyms:**

Macrophage mannose receptor, CLEC13D, CLEC13DL, MRC1L1

**Product images:**


Surface staining of CD206 on human peripheral blood-derived dendritic cells with anti-CD206 (15-2) PE.