

Product datasheet for **AP26442PU-N**

Tnni3 pSer23/24 Rabbit Polyclonal Antibody

Product data:

Product Type:	Primary Antibodies
Applications:	WB
Recommended Dilution:	Western blot: 1/1000.
Reactivity:	Human, Mouse, Primate, Rat
Host:	Rabbit
Isotype:	Ig
Clonality:	Polyclonal
Immunogen:	Phosphopeptide corresponding to amino acid residues surrounding the phospho-Ser 23/24 of mouse troponin I, cardiac (cTnI)
Specificity:	Specific for the ~25k cardiac troponin I protein phosphorylated at Ser 23/24.
Formulation:	10 mM HEPES (pH 7.5), 150 mM NaCl, 100 µg per ml BSA and 50% glycerol State: Aff - Purified State: Liquid Ig fraction
Purification:	Affinity purification via sequential chromatography on phospho- and dephospho-peptide affinity columns
Conjugation:	Unconjugated
Storage:	Upon receipt, store undiluted (in aliquots) at -20°C. Avoid repeated freezing and thawing.
Stability:	Shelf life: one year from despatch.
Gene Name:	troponin I, cardiac 3
Database Link:	Entrez Gene 21954 Mouse P48787



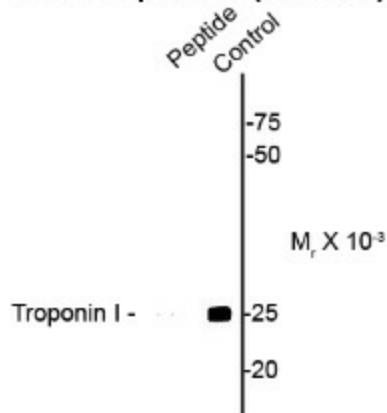
[View online »](#)

Background:

Troponin I (cTnI) is 1 of 3 subunits, along with troponin C (TnC) and troponin T (TnT) of troponin complex found in cardiac muscle. cTnI binds to actin in thin myofilaments to hold the troponin-tropomyosin complex in place, and when cTnI is phosphorylated by protein kinase C and protein kinase A at Ser 23/24 it causes regulation of Ca²⁺-stimulated ATPase (Noland et al, 1995). Evidence suggests that phosphorylation of both serines 23 and 24 is required for the reduction in Ca²⁺-sensitivity and beneficial for relaxation of the heart (Kooij et al, 2010). Ser 23/24 phosphorylation is important for enhanced relaxation in response to prolonged activation of protein kinase C by endothelin in intact myocytes, while Thr 144 plays an important role in the acute acceleration of relaxation (Westfall et al, 2005).

Synonyms:

TNNI3, TNNC1

Product images:**Anti-Troponin I (cardiac)**

Western blot of mouse heart homogenate showing specific immunolabeling of the ~25k cTnI protein phosphorylated at Ser 23/24 (control). Immunolabeling is blocked by preadsorption with the phospho-peptide used as antigen (Peptide), but not by the corresponding dephospho-peptide (not shown).