

## Product datasheet for **AP26434PU-N**

### CD163 Rabbit Polyclonal Antibody

#### Product data:

Product Type:	Primary Antibodies
Applications:	IHC, WB
Recommended Dilution:	<b>ELISA.</b> <b>Western blot.</b> <b>Immunohistochemistry on Frozen Sections:</b> 1/3000. <b>Immunohistochemistry on Paraffin Sections:</b> 1/300, Proteinase K pretreatment for antigen retrieval is recommended. <b>Suggested Positive Control:</b> Human placenta.
Reactivity:	Human, Porcine
Host:	Rabbit
Clonality:	Polyclonal
Immunogen:	Partially purified CD163 from Human placenta. <b>Antigen, epitope:</b> Human CD163 migrates as a 130kDa band in PAGE.
Specificity:	This antibody detects CD163. Recognizes a membrane glycoprotein on Human/Porcine monocytes and macrophages which is expressed in intermediate and late inflammatory stages.
Formulation:	Phosphate buffered saline pH 7.2 (PBS) State: Purified State: Liquid purified Ig fraction Preservative: 0.09% Sodium Azide
Concentration:	5.0 mg/ml
Purification:	Affinity Chromatography
Conjugation:	Unconjugated
Storage:	Store undiluted at 2-8°C.
Stability:	Shelf life: one year from despatch.
Predicted Protein Size:	130 kDa (PAGE)
Gene Name:	CD163 molecule



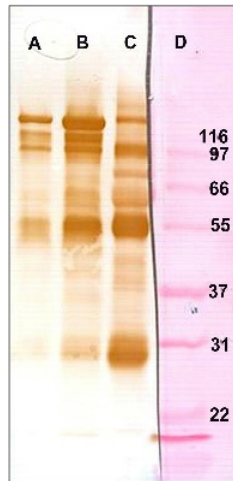
[View online »](#)

**Database Link:** [Entrez Gene 9332 Human Q86VB7](#)

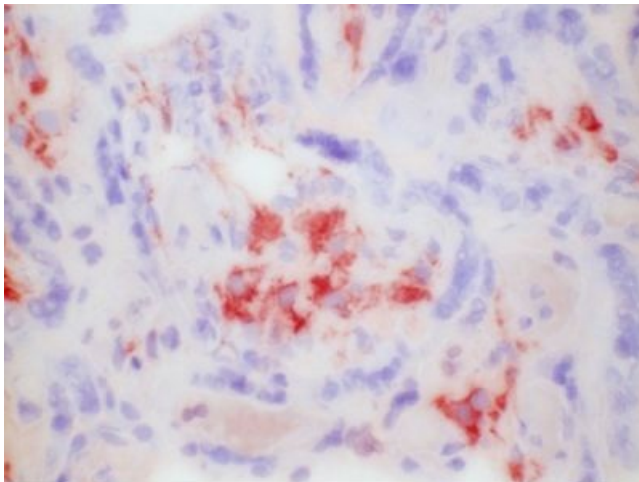
**Background:** CD163 is a scavenger receptor for the haemoglobin-haptoglobin complex, and is upregulated by glucocorticoids and IL-10. The extracellular portion of the receptor is regularly shed and can be found in the circulation. An important function of CD163 seems to be in the adhesion of monocytes to activated endothelial cells. CD163-positive cells include skin histiocytes, Kupffer cells, spleen macrophages of the red pulp, and some thymus macrophages. The antigen is also found abundantly in human term placenta, and regularly in acute and chronic inflammatory lesions.

**Synonyms:** M130, Hemoglobin scavenger receptor, Macrophage marker

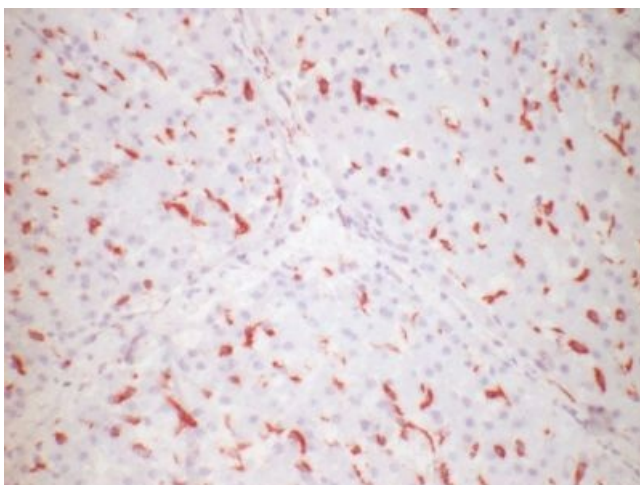
**Product images:**



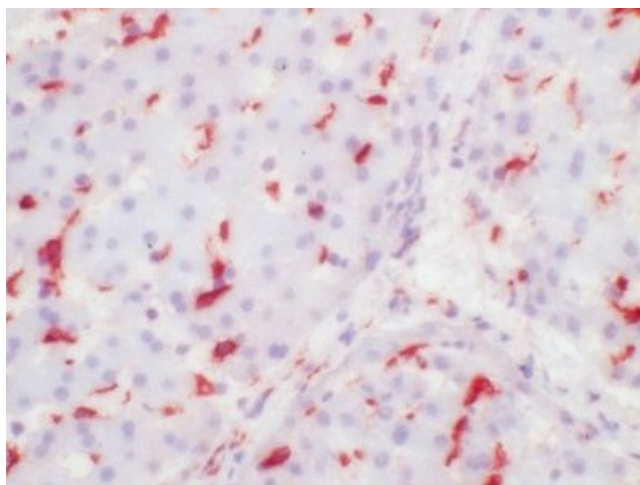
Lane A: CD163 antigen (1ug); Lane B: CD163 antigen (4ug); Lane C: human placenta extracted with 1% Nonidet P-40 in 50mM Tris pH 7.6; Lane D: Ponceau staining of reference proteins.



Immunohistochemistry on frozen sections: Human placenta, stained with.



Immunohistochemistry on frozen sections: Swine liver stained with.



Immunohistochemistry on frozen sections: Swine liver, stained with.