

## Product datasheet for **AP26429AF-L**

### Trpv3 (461-469) Rabbit Polyclonal Antibody

#### Product data:

Product Type:	Primary Antibodies
Applications:	ELISA, WB
Recommended Dilution:	<b>ELISA:</b> 1:5,000 for detection of TRPV3 peptide (YRPREEEI) coated on ELISA plate. <b>Western blot:</b> 1:2,000 to detect the 91kDa TRPV3 in mouse brain tissue extract.
Reactivity:	Mouse
Host:	Rabbit
Clonality:	Polyclonal
Immunogen:	A synthetic peptide corresponding to amino acid 461-469 of mouse TRPV3, conjugated with KLH
Specificity:	This antibody is reactive to the 91kDa TRPV3 from mouse brain tissue and other species with consensus TRPV3 sequence (YRPREEEI).
Formulation:	State: Azide Free State: Lyophilized Ig fraction
Reconstitution Method:	Restore with double distilled water to adjust the final concentration to 1.00 mg/ml.
Purification:	Protein G affinity
Conjugation:	Unconjugated
Storage:	Store lyophilized at 2-8°C for 6 month or at -20°C long term. After reconstitution store the antibody undiluted at 2-8°C for one month or (in aliquots) at -20°C long term. Avoid repeated freezing and thawing.
Stability:	Shelf life: one year from despatch.
Gene Name:	transient receptor potential cation channel, subfamily V, member 3
Database Link:	<a href="#">Entrez Gene 246788 Mouse</a> <a href="#">Q8K424</a>



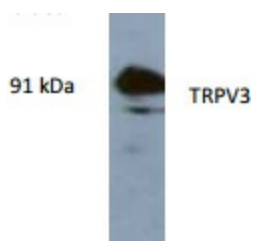
[View online »](#)

**Background:**

Mouse transient receptor potential cation channel V3 (TRPV3) belongs to the family of transient receptor potential ion channels. The members of the family have similar tetramer structure and have shown polymodal activation. TRPV3 is a warmth sensor. It is activated at temperatures between 22 and 40 oC. TRPV3 is thought to be able to form hybrid channel with TRPV1 through hetero-assembly of the monomers. In human, the genes for TRPV3 and TRPV1 are located on chromosome 17.

**Synonyms:**

VRL-3; VRL3

**Product images:**

Western blot analysis of extracts from mouse brain using anti-TRPV3 rabbit whole antiserum.