

Product datasheet for **AP26425AF-L**

Kcnp4 (45-57) Rabbit Polyclonal Antibody

Product data:

Product Type:	Primary Antibodies
Applications:	ELISA, WB
Recommended Dilution:	ELISA: Dilute the antibody approx. 1:300,000 for detection of Kchip4 peptide (KTSSPAIQNSV) coated on ELISA plate. Western blot: Dilute approx. 1:4,000 to detect the 29kDa Kchip4 in mouse brain extract.
Reactivity:	Mouse
Host:	Rabbit
Clonality:	Polyclonal
Immunogen:	A synthetic peptide derived from the amino sequence amino acid 45-57 of mouse Kchip4, conjugated with KLH
Specificity:	This antibody is reactive to the 29kDa Kchip4 in Mouse and other species with consensus Kchip4 sequence.
Formulation:	0.01M PBS, pH 7.4 State: Azide Free State: Lyophilized Ig fraction
Reconstitution Method:	Restore with double distilled water to adjust the final concentration to 1.00 mg/ml.
Purification:	Protein G affinity
Conjugation:	Unconjugated
Storage:	Store lyophilized at 2-8°C for 6 month or at -20°C long term. After reconstitution store the antibody undiluted at 2-8°C for one month or (in aliquots) at -20°C long term. Avoid repeated freezing and thawing.
Stability:	Shelf life: one year from despatch.
Gene Name:	Kv channel interacting protein 4
Database Link:	Entrez Gene 80334 Mouse Q6PHZ8



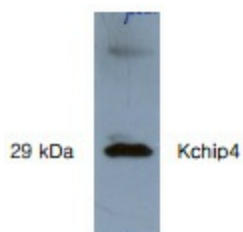
[View online »](#)

Background:

KCHIP4 is a member of the potassium channel interacting protein family. It possesses calcium binding domains like other members of the KCHIP family. KCHIP4 is cloned accidentally with the yeast two- hybrid method using Presenilin as bait. The newly discovered protein does not affect the function of Presenilin, but instead, it will reconstitute the feature of A-type Kv channel after co-expression with Kv4.2, indicating that it is a potassium channel interacting protein.

Synonyms:

KCNIP4, CALP, KCHIP4, Calsenilin-like protein, Kv channel-interacting protein 4

Product images:

Western blot analysis of extracts from mouse brain using anti-kchip4 rabbit whole antiserum.