

## Product datasheet for **AP26412AF-N**

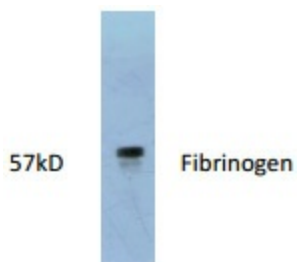
### Fibrinogen Rabbit Polyclonal Antibody

#### Product data:

Product Type:	Primary Antibodies
Applications:	ELISA, WB
Recommended Dilution:	<b>Western blot:</b> 1:50000 dilution (antigen: 5 µg/Lane). <b>ELISA:</b> 200,000~1:400,000 dilution (coating antigen: 800 ng/well) refer to the enclosed data and Experimental Fig 1. For immune-depletion, it can be used for Fibrinogen removal from test sample using affinity method.
Reactivity:	Human
Host:	Rabbit
Clonality:	Polyclonal
Immunogen:	Purified human Fibrinogen
Specificity:	This antibody recognizes human Fibrinogen.
Formulation:	0.01M PBS, pH 7.4 State: Azide Free State: Lyophilized Ig fraction
Reconstitution Method:	Restore with appropriate volume of dH <sub>2</sub> O to reach a final antibody concentration of 1.0 mg/ml.
Purification:	Protein G affinity column
Conjugation:	Unconjugated
Storage:	Store lyophilized at 2-8°C for 6 month or at -20°C long term. After reconstitution store the antibody undiluted at 2-8°C for one month or (in aliquots) at -20°C long term. Avoid repeated freezing and thawing.
Stability:	Shelf life: one year from despatch.
Synonyms:	FGA, FGB, FGG



[View online »](#)

**Product images:**

Western blot analysis of human fibrinogen (1.5 g) using anti-human fibrinogen polyclonal antibody.