

Product datasheet for **AP26411AF-N**

Albumin (ALB) Rabbit Polyclonal Antibody

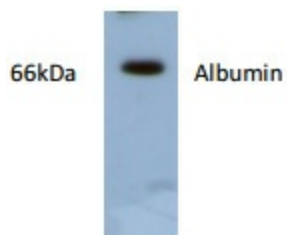
Product data:

Product Type:	Primary Antibodies
Applications:	ELISA, WB
Recommended Dilution:	Western blot: 1:50000 dilution (antigen: 2.5 µg/lane). ELISA: 150,000~1:300,000 dilution (coating antigen: 800 ng/well) refer to the enclosed data and Experimental Fig 1. For immune-depletion, it can be used for Albumin removal from test sample using affinity method.
Reactivity:	Human
Host:	Rabbit
Clonality:	Polyclonal
Immunogen:	Purified human serum albumin
Specificity:	This antibody recognizes human serum albumin.
Formulation:	0.01M PBS, pH 7.4 State: Azide Free State: Lyophilized Ig fraction
Reconstitution Method:	Restore with appropriate volume of dH ₂ O to reach a final antibody concentration of 1.0 mg/ml.
Purification:	Protein G affinity column
Conjugation:	Unconjugated
Storage:	Store lyophilized at 2-8°C for 6 month or at -20°C long term. After reconstitution store the antibody undiluted at 2-8°C for one month or (in aliquots) at -20°C long term. Avoid repeated freezing and thawing.
Stability:	Shelf life: one year from despatch.
Gene Name:	albumin
Database Link:	Entrez Gene 213 Human P02768
Synonyms:	ALB, BSA, HSA, Serum Albumin



[View online »](#)

Product images:



Western blot analysis of human serum albumin (2.5 ug) using anti-human albumin polyclonal antibody.