

Product datasheet for **AP26361PU-N**

STAT4 Rabbit Polyclonal Antibody

Product data:

Product Type:	Primary Antibodies
Applications:	WB
Recommended Dilution:	Western Blot: 0.5-4 µg/ml.
Reactivity:	Human, Mouse, Porcine, Rat
Host:	Rabbit
Clonality:	Polyclonal
Immunogen:	Synthetic peptide surrounding amino acid 732 of Rat Stat4
Specificity:	The antibody recognizes ~97 kDa Stat4 in samples from Human, Mouse, and Rat origins. A ~60 kDa band can also be detected, presumably to be the cleavage fragment of Stat4.
Formulation:	PBS State: Aff - Purified State: Liquid purified IgG fraction Stabilizer: 0.5% BSA, 30% Glycerol Preservative: 0.01% Thimerosal
Concentration:	lot specific
Purification:	Affinity Chromatography
Conjugation:	Unconjugated
Storage:	Upon receipt, store undiluted (in aliquots) at -20°C. Avoid repeated freezing and thawing.
Stability:	Shelf life: One year from despatch.
Gene Name:	signal transducer and activator of transcription 4
Database Link:	<u>Entrez Gene 20849 Mouse</u> <u>Entrez Gene 367264 Rat</u> <u>Entrez Gene 6775 Human</u> <u>Q14765</u>



[View online »](#)

Background:

Membrane receptor signaling by various ligands induces activation of Jak kinases which then leads to tyrosine phosphorylation of the various Stat transcription factors. Stat1 and Stat2 are induced by IFN- α and form a heterodimer which is part of the ISGF3 transcription factor complex. Although early reports indicate Stat3 activation by EGF and IL-6, it has been shown that Stat3 β appears to be activated by both while Stat3 α is activated by EGF, but not by IL-6. Highest expression of Stat4 is seen in testis and myeloid cells. IL-12 has been identified as an activator of Stat4. Stat5 is activated by prolactin and by IL-3. Stat6 is involved in IL-4 activated signaling pathways.

Synonyms:

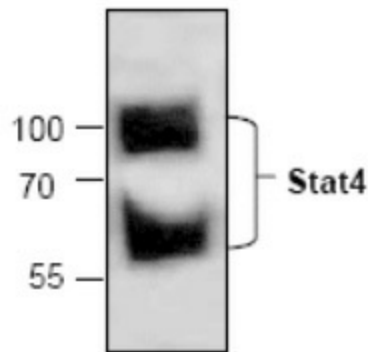
OTTHUMP00000163553; SLEB11

Protein Families:

Druggable Genome, Transcription Factors

Protein Pathways:

Jak-STAT signaling pathway

Product images:

Western Blot analysis of STAT4 expression in Rat kidney tissue lysate.