

Product datasheet for **AP26357PU-N**

CCR4 Rabbit Polyclonal Antibody

Product data:

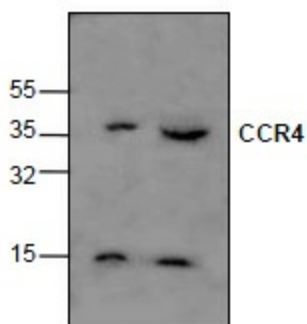
Product Type:	Primary Antibodies
Applications:	WB
Recommended Dilution:	Western blot (2-6 µg/ml).
Reactivity:	Canine, Human, Mouse
Host:	Rabbit
Clonality:	Polyclonal
Immunogen:	Synthetic peptide surrounding amino acid 32 of human CCR4
Specificity:	This antibody detects CCR4 surrounding amino acid 32.
Formulation:	Phosphate-buffered saline (PBS) containing 30% glycerol, 0.5% BSA, and 0.01% thimerosal State: Aff - Purified State: Liquid Ig fraction
Concentration:	lot specific
Purification:	Affinity chromatography
Conjugation:	Unconjugated
Storage:	Upon receipt, store at -20 °C. For long term storage, aliquot and store at -70 °C. Avoid repeated freezing and thawing.
Stability:	Shelf life: One year from despatch.
Gene Name:	C-C motif chemokine receptor 4
Database Link:	Entrez Gene 12773 Mouse Entrez Gene 1233 Human P51679
Background:	CCR4 is a chemokine receptor and is preferentially expressed on type 2 helper T (Th2-type) cells. In contrast to other chemokine receptors, the expression of CCR4 and CCR8 on Th2 cells is transiently increased following TCR and CD28 engagement. Moreover, activated Th1 cells up-regulate CCR4 expression and functional responsiveness to thymus- and activation-regulated chemokine.
Synonyms:	C-C chemokine receptor type 4, C-C CKR-4, CC-CKR-4, CCR-4, CMKBR4, K5-5
Protein Families:	Druggable Genome, GPCR, Transmembrane



[View online »](#)

Protein Pathways: Chemokine signaling pathway, Cytokine-cytokine receptor interaction

Product images:



: Western blot analysis of CCR4 using Jurkat cell lysates.