

## Product datasheet for **AP26352PU-N**

### TRAF6 Rabbit Polyclonal Antibody

#### Product data:

Product Type:	Primary Antibodies
Applications:	WB
Recommended Dilution:	Western blot (0.5-4 µg/ml).
Reactivity:	Human, Mouse, Rat
Host:	Rabbit
Clonality:	Polyclonal
Immunogen:	Synthetic peptide surrounding amino acid 436 of rat TRAF6
Specificity:	This antibody recognizes 54 kDa TRAF6.
Formulation:	Phosphate-buffered saline (PBS) containing 30% glycerol, 0.5% BSA, and 0.01% thimerosal State: Aff - Purified State: Liquid Ig fraction
Concentration:	lot specific
Purification:	Affinity chromatography
Conjugation:	Unconjugated
Storage:	Upon receipt, store at -20 °C. For long term storage, aliquot and store at -70 °C. Avoid repeated freezing and thawing.
Stability:	Shelf life: One year from despatch.
Gene Name:	TNF receptor associated factor 6
Database Link:	<a href="#">Entrez Gene 22034 Mouse</a> <a href="#">Entrez Gene 311245 Rat</a> <a href="#">Entrez Gene 7189 Human</a> <a href="#">Q9Y4K3</a>



[View online »](#)

**Background:**

TRAFs (TNF receptor associated proteins) form a family of cytoplasmic adapter proteins that mediate signal transduction from many members of the TNF-receptor superfamily and the interleukin-1 receptor. The carboxy-terminal region of TRAFs is required for self-association and interaction with receptor cytoplasmic domains following ligand-induced oligomerization. Recent molecular cloning studies have led to identification of six TRAFs (TRAF1-TRAF6). Recently it has been shown that TRANCE/OPGL activates the antiapoptotic serine/threonine kinase Akt/PKB through a signaling complex involving c-Src and TRAF6. Mice deficient in TRAF6 are osteopetrotic with defects in bone remodeling and tooth eruption due to impaired osteoclast function. Like TRAF2 and TRAF3, TRAF6 is also essential for perinatal and postnatal survival. These findings establish diverse and critical roles for TRAF6 in perinatal and postnatal survival, bone metabolism, LPS, and cytokine signaling.

**Synonyms:**

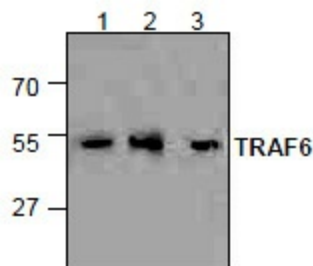
TNF receptor-associated factor 6

**Protein Families:**

Druggable Genome

**Protein Pathways:**

Endocytosis, MAPK signaling pathway, Neurotrophin signaling pathway, NOD-like receptor signaling pathway, Pathways in cancer, RIG-I-like receptor signaling pathway, Small cell lung cancer, Toll-like receptor signaling pathway, Ubiquitin mediated proteolysis

**Product images:**

: Western blot analysis of TRAF6 in 3T3 cell lysate (Lane 1) and in Jurkat cell lysate (Lane 2 & 3).