

Product datasheet for **AP26345PU-N**

ICAM1 Rabbit Polyclonal Antibody

Product data:

Product Type:	Primary Antibodies
Applications:	IHC, WB
Recommended Dilution:	Western blot (0.5-4 µg/ml). Immunohistochemistry.
Reactivity:	Human, Mouse, Rat
Host:	Rabbit
Clonality:	Polyclonal
Immunogen:	Synthetic peptide surrounding amino acid 359 of human CXCR5
Specificity:	This antibody recognizes ~89-92 kDa ICAM-1.
Formulation:	Phosphate-buffered saline (PBS) containing 30% glycerol, 0.5% BSA and 0.01% thimerosal State: Aff - Purified State: Liquid Ig fraction
Concentration:	lot specific
Purification:	Affinity chromatography
Conjugation:	Unconjugated
Storage:	Upon receipt, store at -20 °C. For long term storage, aliquot and store at -70 °C. Avoid repeated freezing and thawing.
Stability:	Shelf life: One year from despatch.
Gene Name:	intercellular adhesion molecule 1
Database Link:	Entrez Gene 15894 Mouse Entrez Gene 3383 Human P05362
Background:	Cell adhesion molecules (CAMs) are a family of closely related cell surface glycoproteins involved in cell-cell interactions during growth and are thought to play an important role in embryogenesis and development. The family contains NCAM (for neuronal cell adhesion molecule), ICAM (for intercellular adhesion molecule), VCAM (vascular cell adhesion molecule), PECAM-1 (platelet/endothelial cell adhesion molecule-1), etc. ICAM-1, also referred to as CD54, is an integral membrane protein of the immunoglobulin superfamily and recognizes the B2a1 and B2aM integrins.



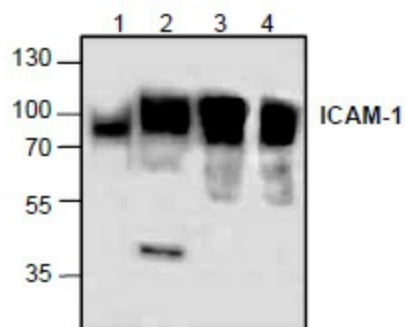
[View online »](#)

Synonyms: ICAM-1

Protein Families: Druggable Genome, ES Cell Differentiation/IPS, Transmembrane

Protein Pathways: Cell adhesion molecules (CAMs), Leukocyte transendothelial migration, Natural killer cell mediated cytotoxicity, Viral myocarditis

Product images:



AP26345PU-N: Western blot analysis of ICAM-1 using lysates from rat kidney (Lane 1), 3T3 cells (Lane 2), and Jurkat cells (Lane 3 & 4).