

Product datasheet for **AP26343PU-N**

Endo G (ENDO G) Rabbit Polyclonal Antibody

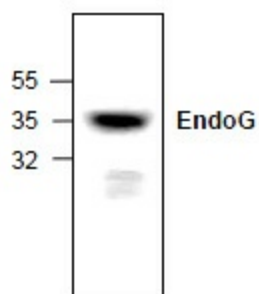
Product data:

Product Type:	Primary Antibodies
Applications:	WB
Recommended Dilution:	Western blot (0.5-4 µg/ml).
Reactivity:	Human, Mouse, Rat
Host:	Rabbit
Clonality:	Polyclonal
Immunogen:	Synthetic peptide surrounding amino acid 280 of rat EndoG
Specificity:	This antibody recognizes ~35 kDa EndoG.
Formulation:	Phosphate buffered saline (PBS), pH 7.2, containing 30% glycerol, 0.5% BSA, 0.01% thimerosal State: Aff - Purified State: Liquid Ig fraction
Concentration:	lot specific
Purification:	Affinity chromatography
Conjugation:	Unconjugated
Storage:	Upon receipt, store at -20 °C. For long term storage, aliquot and store at -70 °C. Avoid repeated freezing and thawing.
Stability:	Shelf life: One year from despatch.
Gene Name:	endonuclease G
Database Link:	Entrez Gene 13804 Mouse Entrez Gene 362100 Rat Entrez Gene 2021 Human Q14249
Background:	Endonuclease G (EndoG) is a mitochondrion-specific nuclease that specifically activated by apoptotic stimuli and translocates to the nucleus during apoptosis. In nucleus, EndoG induces nucleosomal fragmentation of DNA independent of caspase and DFF/CAD.
Synonyms:	ENDO G
Protein Families:	Druggable Genome
Protein Pathways:	Apoptosis



[View online »](#)

Product images:



: Western blot analysis of EndoG expression in rat kidney issue lysate.