

Product datasheet for **AP26340PU-N**

STAT1 Rabbit Polyclonal Antibody

Product data:

Product Type:	Primary Antibodies
Applications:	WB
Recommended Dilution:	Western blot (0.5-4 µg/ml).
Reactivity:	Human, Mouse, Rat
Host:	Rabbit
Isotype:	IgG
Clonality:	Polyclonal
Immunogen:	Synthetic peptide surrounding amino acid 672 of rat Stat1
Specificity:	This antibody recognizes both alpha (91 kDa) and beta (84 kDa) subunits of STAT1.
Formulation:	Phosphate-buffered saline (PBS) containing 30% glycerol, 0.5% BSA, and 0.01% thimerosal State: Aff - Purified State: Liquid Ig fraction
Concentration:	lot specific
Purification:	Affinity chromatography
Conjugation:	Unconjugated
Storage:	Upon receipt, store at -20 °C. For long term storage, aliquot and store at -70 °C. Avoid repeated freezing and thawing.
Stability:	Shelf life: One year from despatch.
Gene Name:	signal transducer and activator of transcription 1
Database Link:	Entrez Gene 20846 Mouse Entrez Gene 25124 Rat Entrez Gene 6772 Human P42224



[View online »](#)

Background:

STATs (signal transducers and activators of transcription) are a family of cytoplasmic latent transcription factors that are activated to regulate gene expression in response to a large number of extracellular signalling peptides including cytokines, interferons, and growth factors. After phosphorylation by JAK tyrosine kinases, STATs enter the nucleus to regulate transcription of many different genes. Among the seven STATs (Stat1, Stat2, Stat3, Stat4, Stat5a, Stat5b, and Stat6). Stat1, Stat3, Stat5a and Stat5b have wide activation profiles. Stat1 is activated by many different ligands including IFN family (IFN-a, IFN-b, IFN-r, and IL-10), gp130 family (IL-6, IL-11, LIF, CNTF, and G-CSF-1), and receptor tyrosine kinases (EGF, PDGF, and CSF-1). Stat1 has two forms, the 91 kDa STAT1 α and the 84 kDa STAT1 β , which are coded by the same gene with splicing variant.

Synonyms:

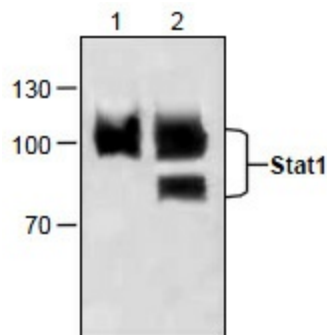
DKFZp686B04100; ISGF-3; OTTHUMP00000205845; STAT91

Protein Families:

Druggable Genome, Transcription Factors

Protein Pathways:

Chemokine signaling pathway, Jak-STAT signaling pathway, Pancreatic cancer, Pathways in cancer, Toll-like receptor signaling pathway

Product images:

: Western blot analysis of Stat1 expression in lysate from 3T3 cells (Lane 1) and rat kidney (Lane 2).