

## Product datasheet for **AP26073PU-N**

### beta Catenin (CTNNB1) (327-331) Rabbit Polyclonal Antibody

#### Product data:

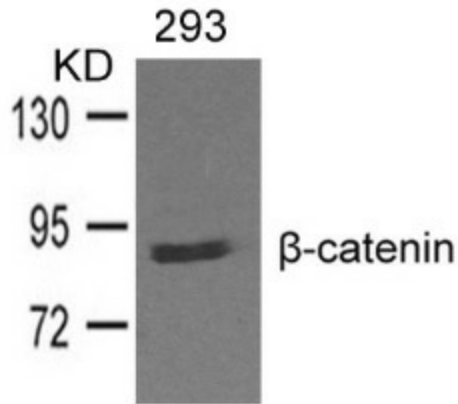
Product Type:	Primary Antibodies
Applications:	WB
Recommended Dilution:	Western blot: 1:500~1:1000.
Reactivity:	Human, Mouse, Rat
Host:	Rabbit
Clonality:	Polyclonal
Immunogen:	Peptide sequence around aa. 327~331 derived from Human $\beta$ -catenin
Specificity:	This antibody detects endogenous levels of total $\beta$ -catenin protein.
Formulation:	Phosphate buffered saline (without Mg <sup>2+</sup> and Ca <sup>2+</sup> ), pH 7.4, 150mM NaCl, 0.02% sodium azide and 50% glycerol State: Aff - Purified State: Liquid Ig fraction
Concentration:	lot specific
Purification:	Affinity-chromatography using epitope-specific peptide
Conjugation:	Unconjugated
Storage:	Store undiluted at 2-8°C for one month or (in aliquots) at -20°C for longer. Avoid repeated freezing and thawing.
Stability:	Shelf life: one year from despatch.
Gene Name:	catenin beta 1
Database Link:	<a href="#">Entrez Gene 12387 Mouse</a> <a href="#">Entrez Gene 84353 Rat</a> <a href="#">Entrez Gene 1499 Human P35222</a>
Background:	Involved in the regulation of cell adhesion and in signal transduction through the Wnt pathway.
Synonyms:	CTNNB1, CTNNB, Beta-catenin
Note:	Molecular weight: 92 kDa
Protein Families:	Druggable Genome, ES Cell Differentiation/IPS, Transcription Factors



[View online »](#)

**Protein Pathways:**

Adherens junction, Arrhythmogenic right ventricular cardiomyopathy (ARVC), Basal cell carcinoma, Colorectal cancer, Endometrial cancer, Focal adhesion, Leukocyte transendothelial migration, Melanogenesis, Pathogenic Escherichia coli infection, Pathways in cancer, Prostate cancer, Thyroid cancer, Tight junction, Wnt signaling pathway

**Product images:**

Western blot analysis of extracts from 293 cells and using  $\beta$ -catenin Antibody.