

Product datasheet for **AP26072PU-S**

CKII alpha (CSNK2A1) (353-357) Rabbit Polyclonal Antibody

Product data:

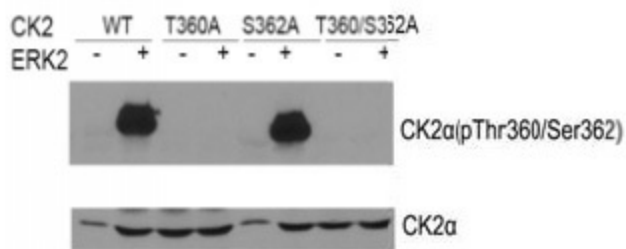
Product Type:	Primary Antibodies
Applications:	WB
Recommended Dilution:	Western blot: 1:1000.
Reactivity:	Human, Mouse, Rat
Host:	Rabbit
Clonality:	Polyclonal
Immunogen:	Peptide sequence around aa. 353~357
Specificity:	This antibody detects endogenous levels of total CK2 protein.
Formulation:	Phosphate buffered saline (without Mg ²⁺ and Ca ²⁺), pH 7.4, 150mM NaCl, 0.02% sodium azide and 50% glycerol State: Aff - Purified State: Liquid Ig fraction
Concentration:	lot specific
Purification:	Affinity-chromatography using epitope-specific peptide
Conjugation:	Unconjugated
Storage:	Store (in aliquots) at -20 °C. Avoid repeated freezing and thawing.
Stability:	Shelf life: one year from despatch.
Gene Name:	casein kinase 2 alpha 1
Database Link:	Entrez Gene 12995 Mouse Entrez Gene 116549 Rat Entrez Gene 1457 Human P68400
Background:	Casein kinases are operationally defined by their preferential utilization of acidic proteins such as caseins as substrates. The alpha and alpha' chains contain the catalytic site. Participates in Wnt signaling. CK2 phosphorylates 'Ser-392' of p53/TP53 following UV irradiation.
Synonyms:	CSNK2A1, CK2A1, CK II alpha
Note:	Molecular weight: 42 kDa
Protein Families:	Druggable Genome, ES Cell Differentiation/IPS, Protein Kinase



[View online »](#)

Protein Pathways: Adherens junction, Tight junction, Wnt signaling pathway

Product images:



Western blot of CK2a (Phospho-Thr360/Ser362) antibody and CK2a antibody in vitro kinase assay. Both purified ERK2 and CK2 were used.