

## Product datasheet for **AP26071PU-S**

### VEGF Receptor 2 (KDR) (1057-1061) Rabbit Polyclonal Antibody

#### Product data:

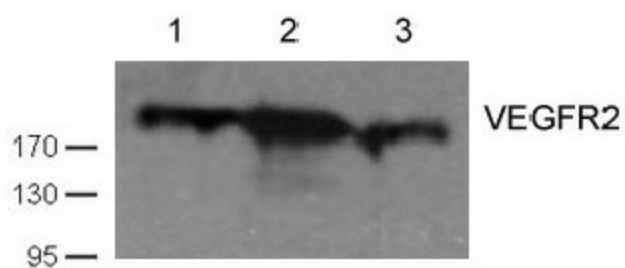
Product Type:	Primary Antibodies
Applications:	WB
Recommended Dilution:	Western blot: 1:1000.
Reactivity:	Human, Mouse
Host:	Rabbit
Clonality:	Polyclonal
Immunogen:	Peptide sequence around aa. 1057~1061
Specificity:	This antibody detects endogenous levels of total VEGFR2 protein.
Formulation:	Phosphate buffered saline (without Mg <sup>2+</sup> and Ca <sup>2+</sup> ), pH 7.4, 150mM NaCl, 0.02% sodium azide and 50% glycerol State: Aff - Purified State: Liquid Ig fraction
Concentration:	lot specific
Purification:	Affinity-chromatography using epitope-specific peptide
Conjugation:	Unconjugated
Storage:	Store (in aliquots) at -20 °C. Avoid repeated freezing and thawing.
Stability:	Shelf life: one year from despatch.
Gene Name:	kinase insert domain receptor
Database Link:	<a href="#">Entrez Gene 16542 Mouse</a> <a href="#">Entrez Gene 3791 Human</a> <a href="#">P35968</a>
Background:	Receptor for VEGF or VEGFC. Has a tyrosine-protein kinase activity. The VEGF-kinase ligand/receptor signaling system plays a key role in vascular development and regulation of vascular permeability. In case of HIV-1 infection, the interaction with extracellular viral Tat protein seems to enhance angiogenesis in Kaposi's sarcoma lesions.
Synonyms:	VEGFR2, FLK1, KDR, VEGF Receptor 2
Note:	Molecular weight: 210/230 kDa
Protein Families:	Druggable Genome, ES Cell Differentiation/IPS, Protein Kinase, Transmembrane



[View online »](#)

Protein Pathways: Cytokine-cytokine receptor interaction, Endocytosis, Focal adhesion, VEGF signaling pathway

### Product images:



Western blot analysis of cell lysates using VEGFR2 antibody (Lane 1 and 2: Huvec cell; Lane 3 HT29 cell)