

Product datasheet for **AP26070PU-N**

EIF1 (4-8) Rabbit Polyclonal Antibody

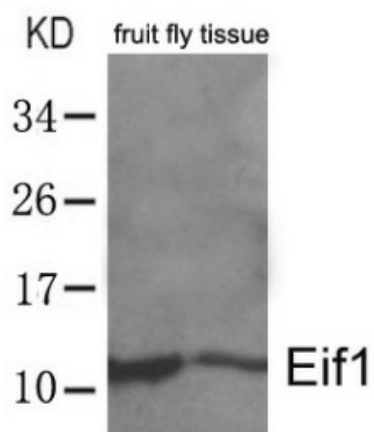
Product data:

Product Type:	Primary Antibodies
Applications:	WB
Recommended Dilution:	Western blot: 1:500~1:1000.
Reactivity:	Drosophila
Host:	Rabbit
Clonality:	Polyclonal
Immunogen:	Peptide sequence around aa. 4~8 derived from Drosophila Eif1
Specificity:	This antibody detects endogenous levels of total Eif1 protein.
Formulation:	Phosphate buffered saline (without Mg ²⁺ and Ca ²⁺), pH 7.4, 150mM NaCl, 0.02% sodium azide and 50% glycerol State: Aff - Purified State: Liquid Ig fraction
Concentration:	lot specific
Purification:	Affinity-chromatography using epitope-specific peptide
Conjugation:	Unconjugated
Storage:	Store (in aliquots) at -20 °C. Avoid repeated freezing and thawing.
Stability:	Shelf life: one year from despatch.
Gene Name:	eukaryotic translation initiation factor 1
Database Link:	Entrez Gene 10209 Human P41567
Background:	Necessary for scanning and involved in initiation site selection. Promotes the assembly of 48S ribosomal complexes at the authentic initiation codon of a conventional capped mRNA.
Synonyms:	Sui1iso1, A121
Note:	Molecular weight: 13 kDa



[View online »](#)

Product images:



Western blot analysis of extracts from whole fruit fly (*Drosophila melanogaster*) tissue lysate using Eif1 Antibody.