

Product datasheet for **AP26069PU-S**

Fbxl3 (1-5) Rabbit Polyclonal Antibody

Product data:

Product Type:	Primary Antibodies
Applications:	WB
Recommended Dilution:	Western blot: 1:500~1:1000.
Reactivity:	Mouse
Host:	Rabbit
Clonality:	Polyclonal
Immunogen:	Peptide sequence around aa.1~5 derived from mouse FBXL3
Specificity:	This antibody detects endogenous levels of total FBXL3 protein.
Formulation:	Phosphate buffered saline (without Mg ²⁺ and Ca ²⁺), pH 7.4, 150mM NaCl, 0.02% sodium azide and 50% glycerol State: Aff - Purified State: Liquid Ig fraction
Concentration:	lot specific
Purification:	Affinity-chromatography using epitope-specific peptide
Conjugation:	Unconjugated
Storage:	Store (in aliquots) at -20 °C. Avoid repeated freezing and thawing.
Stability:	Shelf life: one year from despatch.
Gene Name:	F-box and leucine-rich repeat protein 3
Database Link:	Entrez Gene 50789 Mouse Q8C4V4
Background:	This gene encodes a member of the F-box protein family which is characterized by an approximately 40 amino acid motif, the F-box. The F-box proteins constitute one of the four subunits of ubiquitin protein ligase complex called SCFs (SKP1-cullin-F-box), which function in phosphorylation-dependent ubiquitination. The F-box proteins are divided into 3 classes: Fbws containing WD-40 domains, Fbls containing leucine-rich repeats, and Fbxs containing either different protein-protein interaction modules or no recognizable motifs. The protein encoded by this gene belongs to the Fbls class and, in addition to an F-box, contains several tandem leucine-rich repeats and is localized in the nucleus.

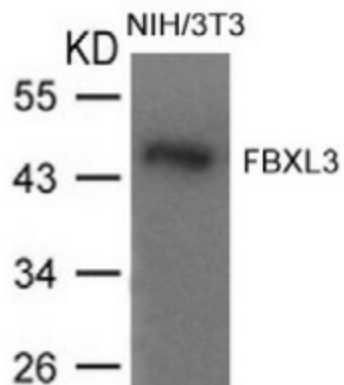


[View online »](#)

Synonyms: FBL3A, FBXL3A

Note: Molecular weight: 49 kDa

Product images:



Western blot analysis of extracts from NIH/3T3 cells using FBXL3 Antibody.