

Product datasheet for **AP26068PU-S**

Prolactin Receptor (PRLR) (25-29) Rabbit Polyclonal Antibody

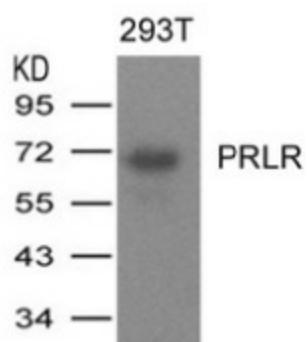
Product data:

| | |
|-----------------------|---|
| Product Type: | Primary Antibodies |
| Applications: | WB |
| Recommended Dilution: | Western blot: 1:500~1:1000. |
| Reactivity: | Human |
| Host: | Rabbit |
| Clonality: | Polyclonal |
| Immunogen: | Peptide sequence around aa.25~29 derived from Human PRLR |
| Specificity: | This antibody detects endogenous levels of total PRLR protein. |
| Formulation: | Phosphate buffered saline (without Mg ²⁺ and Ca ²⁺), pH 7.4, 150mM NaCl, 0.02% sodium azide and 50% glycerol State: Aff - Purified State: Liquid Ig fraction |
| Concentration: | lot specific |
| Purification: | Affinity-chromatography using epitope-specific peptide |
| Conjugation: | Unconjugated |
| Storage: | Store (in aliquots) at -20 °C. Avoid repeated freezing and thawing. |
| Stability: | Shelf life: one year from despatch. |
| Gene Name: | prolactin receptor |
| Database Link: | Entrez Gene 5618 Human P16471 |
| Background: | This is a receptor for the anterior pituitary hormone prolactin (PRL). Isoform 4 is unable to transduce prolactin signaling. Isoform 6 is unable to transduce prolactin signaling. |
| Synonyms: | PRLR, PRL-R |
| Note: | Molecular weight: 70 kDa |
| Protein Families: | Druggable Genome, Transmembrane |
| Protein Pathways: | Cytokine-cytokine receptor interaction, Jak-STAT signaling pathway, Neuroactive ligand-receptor interaction |



[View online »](#)

Product images:



Western blot analysis of extracts from 293T cells expressing human PRLR protein using PRLR Antibody.