

## Product datasheet for **AP26068PU-N**

### Prolactin Receptor (PRLR) (25-29) Rabbit Polyclonal Antibody

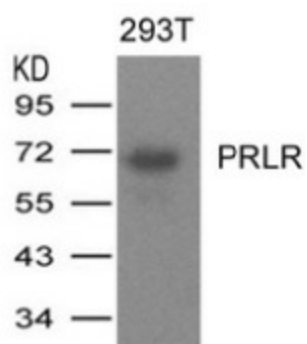
#### Product data:

Product Type:	Primary Antibodies
Applications:	WB
Recommended Dilution:	Western blot: 1:500~1:1000.
Reactivity:	Human
Host:	Rabbit
Clonality:	Polyclonal
Immunogen:	Peptide sequence around aa.25~29 derived from Human PRLR
Specificity:	This antibody detects endogenous levels of total PRLR protein.
Formulation:	Phosphate buffered saline (without Mg <sup>2+</sup> and Ca <sup>2+</sup> ), pH 7.4, 150mM NaCl, 0.02% sodium azide and 50% glycerol State: Aff - Purified State: Liquid Ig fraction
Concentration:	lot specific
Purification:	Affinity-chromatography using epitope-specific peptide
Conjugation:	Unconjugated
Storage:	Store (in aliquots) at -20 °C. Avoid repeated freezing and thawing.
Stability:	Shelf life: one year from despatch.
Gene Name:	prolactin receptor
Database Link:	<a href="#">Entrez Gene 5618 Human P16471</a>
Background:	This is a receptor for the anterior pituitary hormone prolactin (PRL). Isoform 4 is unable to transduce prolactin signaling. Isoform 6 is unable to transduce prolactin signaling.
Synonyms:	PRLR, PRL-R
Note:	Molecular weight: 70 kDa
Protein Families:	Druggable Genome, Transmembrane
Protein Pathways:	Cytokine-cytokine receptor interaction, Jak-STAT signaling pathway, Neuroactive ligand-receptor interaction



[View online »](#)

## Product images:



Western blot analysis of extracts from 293T cells expressing human PRLR protein using PRLR Antibody.