

## Product datasheet for **AP26066PU-N**

### Lin28 (LIN28A) (1-5) Rabbit Polyclonal Antibody

#### Product data:

Product Type:	Primary Antibodies
Applications:	WB
Recommended Dilution:	Western blot: 1:1000.
Reactivity:	Human, Mouse, Rat
Host:	Rabbit
Clonality:	Polyclonal
Immunogen:	Peptide sequence around aa. 1~5 derived from Human Lin28
Specificity:	This antibody detects endogenous levels of total Lin28 protein.
Formulation:	Phosphate buffered saline (without Mg <sup>2+</sup> and Ca <sup>2+</sup> ), pH 7.4, 150mM NaCl, 0.02% sodium azide and 50% glycerol State: Aff - Purified State: Liquid Ig fraction
Concentration:	lot specific
Purification:	Affinity-chromatography using epitope-specific peptide
Conjugation:	Unconjugated
Storage:	Store (in aliquots) at -20 °C. Avoid repeated freezing and thawing.
Stability:	Shelf life: one year from despatch.
Gene Name:	lin-28 homolog A
Database Link:	<a href="#">Entrez Gene 83557 Mouse</a> <a href="#">Entrez Gene 500562 Rat</a> <a href="#">Entrez Gene 79727 Human</a> <a href="#">Q9H9Z2</a>



[View online »](#)

**Background:**

Acts as a 'translational enhancer', driving specific mRNAs to polysomes and thus increasing the efficiency of protein synthesis. Its association with the translational machinery and target mRNAs results in an increased number of initiation events per molecule of mRNA and, indirectly, in stabilizing the mRNAs. Binds IGF2 mRNA, MYOD1 mRNA, ARBP/36B4 ribosomal protein mRNA and its own mRNA. Essential for skeletal muscle differentiation program through the translational up-regulation of IGF2 expression. Acts as a suppressor of microRNA (miRNA) biogenesis by specifically binding the precursor let-7 (pre-let-7), a miRNA precursor. Acts by binding pre-let-7 and recruiting ZCCHC11/TUT4 uridylyltransferase, leading to the terminal uridylation of pre-let-7. Uridylated pre-let-7 miRNAs fail to be processed by Dicer and undergo degradation. Degradation of pre-let-7 in embryonic stem (ES) cells contributes to the maintenance of ES cells.

**Synonyms:**

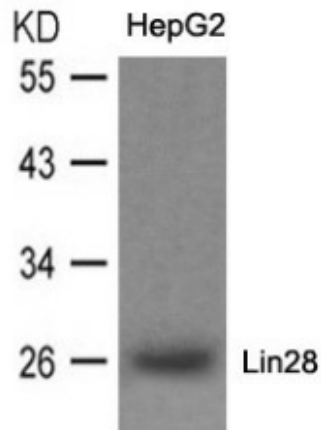
LIN-28, LIN28A, CSDD1, ZCCHC1

**Note:**

Molecular weight: 26 kDa

**Protein Families:**

Transcription Factors

**Product images:**

Western blot analysis of extracts from HepG2 cells using Lin28 Antibody.