

Product datasheet for **AP26055PU-N**

BMAL1 (ARNTL) (569-573) Rabbit Polyclonal Antibody

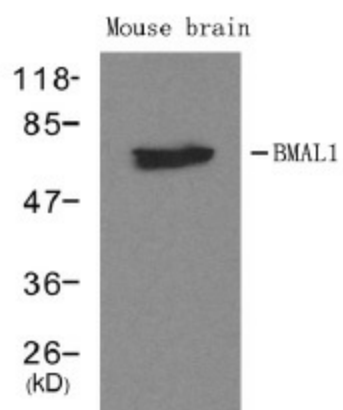
Product data:

Product Type:	Primary Antibodies
Applications:	WB
Recommended Dilution:	Western blot: 1:500 - 1:1000.
Reactivity:	Human, Mouse, Rat
Host:	Rabbit
Clonality:	Polyclonal
Immunogen:	Peptide sequence around aa.569~573 derived from Human BMAL1
Specificity:	This antibody detects endogenous level of total BMAL1 protein.
Formulation:	Phosphate buffered saline (without Mg ²⁺ and Ca ²⁺), pH 7.4, 150mM NaCl, 0.02% sodium azide and 50% glycerol State: Aff - Purified State: Liquid Ig fraction
Concentration:	lot specific
Purification:	Affinity-chromatography using epitope-specific peptide
Conjugation:	Unconjugated
Storage:	Store (in aliquots) at -20 °C. Avoid repeated freezing and thawing.
Stability:	Shelf life: one year from despatch.
Gene Name:	aryl hydrocarbon receptor nuclear translocator like
Database Link:	Entrez Gene 11865 Mouse Entrez Gene 29657 Rat Entrez Gene 406 Human O00327
Background:	ARNTL-CLOCK heterodimers activate E-box element (3'-CACGTG-5') transcription of a number of proteins of the circadian clock. This transcription is inhibited in a feedback loop by PER, and also by CRY proteins.
Synonyms:	BHLHE5, MOP3, PASD3, bHLHe5, bHLH-PAS protein JAP3
Note:	Molecular weight: 69 kDa
Protein Families:	Druggable Genome, Transcription Factors
Protein Pathways:	Circadian rhythm - mammal



[View online »](#)

Product images:



Western blot analysis of extracts from mouse brain tissue using BMAL1 antibody.